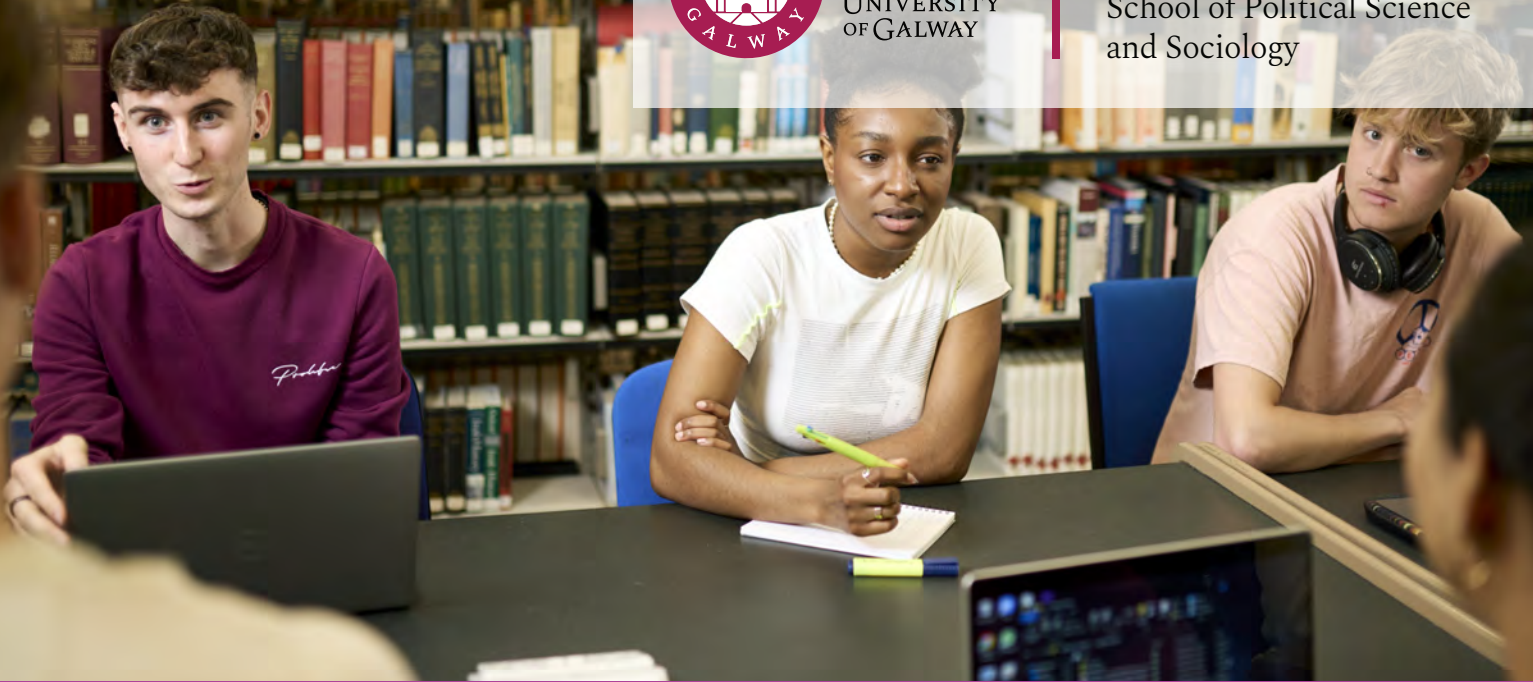




OLLSCOIL NA  
GAILLIMHE  
UNIVERSITY  
OF GALWAY

Scoil na hEolaíochta Polaitiúla  
agus na Socheolaíochta  
School of Political Science  
and Sociology



## BA in Child, Youth and Family: Policy and Practice

- The BA in Child, Youth and Family: Policy and Practice is a programme of the UNESCO Child and Family Research Centre within the Discipline of Applied Social Science at the School of Political Science and Sociology.
- It is an interdisciplinary programme that examines the impacts of societal developments and challenges on children, young people and families over the life course and builds in-depth understanding of all aspects of policy intervention and practice in the field.



I feel I was very lucky to have undertaken the BA Child, Youth and Family. It really opened doors to a lot of great opportunities. The placement aspect of it really proved beneficial! - Stephanie Moriarty



## COURSE FACTS

Course Name:	BA in Child, Youth and Family: Policy and Practice
CAO Code	GY137
Duration:	4 years
Course Level:	8
Entry Requirements:	Minimum Grade H5 in two subjects and passes in four other subjects at O6/H7 level in the Leaving Certificate, including Irish, English, another language, and three other subjects recognised for entry purposes.

# Course Outline

## YEAR ONE

- Introduction to Child, Youth and Family Studies
- Youth Development
- Children and Health
- Introduction to Politics
- Practising Politics
- Introduction to Sociology
- Practising Sociology
- Introduction to Economic Policy
- Community Development
- Social Research Skills
- Personal and Professional Development

## YEAR TWO

- Understanding Family and Society
- Youth Work Principles and Practice
- Child, Youth and Family Service Provision in Ireland
- Child Protection and Welfare
- Economics of Family Policy
- Social Issues and Policy Responses
- Sociology of Health
- Politics and Society: Themes and Topics
- Economics of Public and Social Policy
- Methods for Social and Political Science
- Professional Development Skills

## YEAR THREE

- Professional Work Placement (Sept-June). Examples of placement settings include: community, youth, education, family support or cultural organisations and government agencies.

## YEAR FOUR

- Research, Policy and Practice
- Safeguarding Children, Young People and Vulnerable Adults
- Issues in Contemporary Families
- Family Law
- Youth and Society
- Equality, Diversity and Collective Action
- Children and Young People in Families Today
- Key Words in Social Work and Social Welfare
- Introduction to Social Work

### PROFESSIONAL WORK PLACEMENT

All students complete a full-year professional placement in third year. This includes the opportunity to undertake international professional placements subject to Programme Board approval.

### FURTHER STUDY

Upon completion of this programme you will be eligible to apply for a range of MA courses subject to meeting programme-specific entry requirements such as the MA in Social Work, MA in Family Support Studies, MA in Child, Youth and Community, MA in Public Policy, MA Politics and Sociology, MA Gender, Globalisation and Rights.

### CAREER OPPORTUNITIES

Graduates are well-prepared for employment in youth work, child welfare and family support, educational settings, community development practice, disability services, social work, social policy, civil or public service or research-focused opportunities.

### Find Out More

Dr Helen Casey  
e. [helen.casey@universityofgalway.ie](mailto:helen.casey@universityofgalway.ie)

Dr Deirdre Hardiman  
e. [deirdre.hardiman@universityofgalway.ie](mailto:deirdre.hardiman@universityofgalway.ie)

w. [universityofgalway.ie/soc](http://universityofgalway.ie/soc)  
(Click Undergraduate Courses)

School of Political Science and Sociology

