



OLLSCOIL NA GAILLIMHE  
UNIVERSITY OF GALWAY

# GY101: Performance and Screen Studies: *PSS Modules Orientation*



OLLSCOIL NA GAILLIMHE  
UNIVERSITY OF GALWAY

Scoil an Bhéarla, na Meán agus na  
nEalaíon Cruthaitheach  
School of English, Media and  
Creative Arts



Dr. Charlotte McIvor  
and  
Dr. Seán Crosson,  
programme co-directors

University  
ofGalway.ie

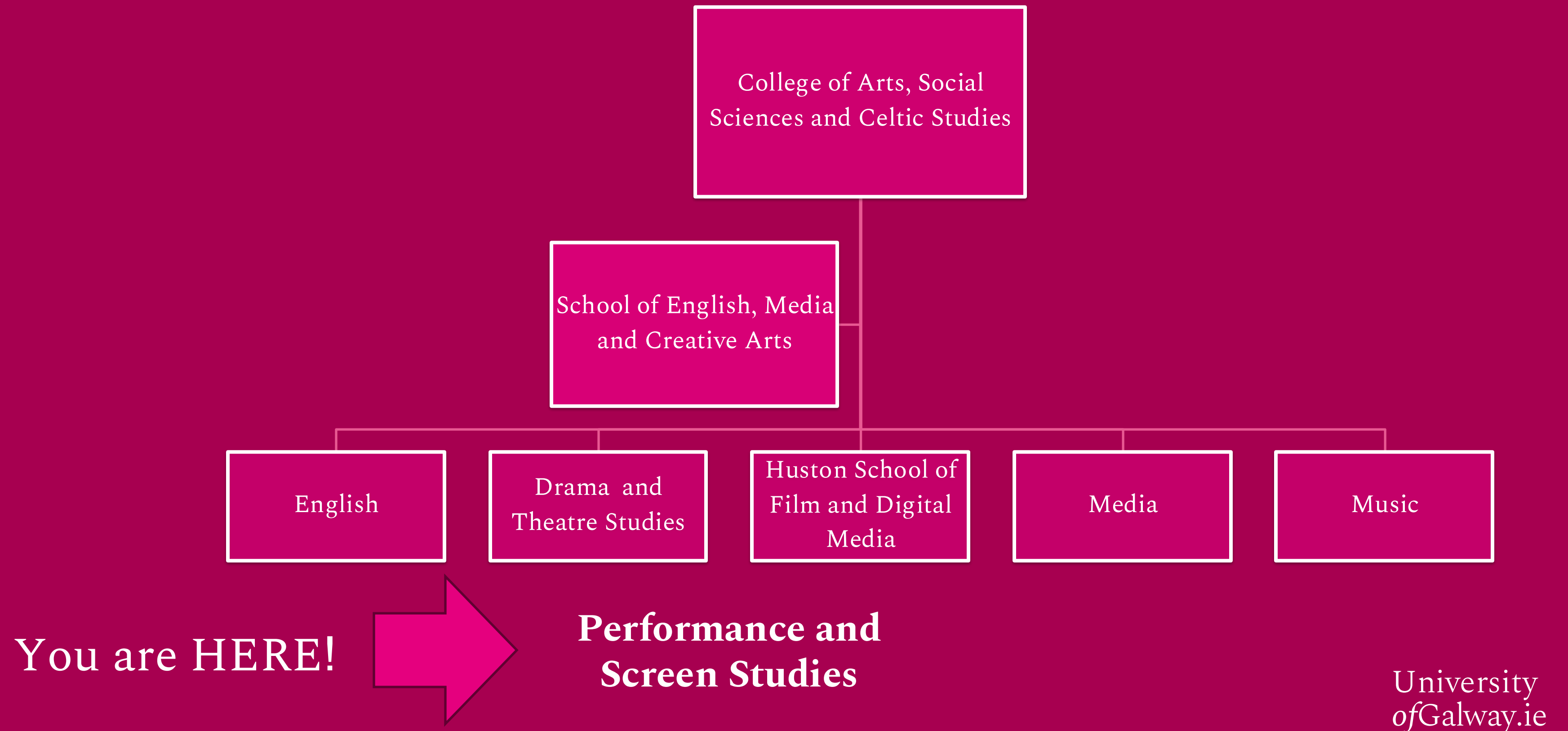
# In this presentation, we will cover:

- What is Performance Studies and what is Screen Studies? Why study both together?
- What modules will I take and how will I learn in this subject?
- Module Material, Submitting Work and Guidelines/Policies
- Questions





OLLSCOIL NA GAILLIMHE  
UNIVERSITY OF GALWAY



University  
ofGalway.ie

# Main Contacts:

## *Performance and Screen Studies*

Name	Role	Email
Dr Seán Crosson	Co-Head of Performance and Screen Studies, Head of First Year	<a href="mailto:sean.crosson@universityofgalway.ie">sean.crosson@universityofgalway.ie</a>
Dr Charlotte McIvor	Co-Head of Performance and Screen Studies, Head of Second and Final Year, Coordinator for Global Galway/Erasmus Year	<a href="mailto:charlotte.mcivor@universityofgalway.ie">charlotte.mcivor@universityofgalway.ie</a>
Teresa O'Donovan	Administrator, Drama and Theatre Studies and Performance and Screen Studies	<a href="mailto:odonovant@universityofgalway.ie">odonovant@universityofgalway.ie</a>





OLLSCOIL NA GAILLIMHE  
UNIVERSITY OF GALWAY

Refer to your year One  
PSS handbook for all  
module descriptions and  
direct module convenor  
contact information.



# Further module, programme, and contact information for module lecturers available in your handbook

<https://www.universityofgalway.ie/colleges-and-schools/arts-social-sciences-and-celtic-studies/english-media-creative-arts/performanceandscreenstudies/>

News	<b>COURSE OVERVIEW</b>  This programme presents two internationally-recognised academic disciplines – Performance Studies and Screen Studies – and draws them together to create a unique subject that involves the lecture-based study of Drama, Film, Television, social media, sporting events and sportsmedia, gaming, streaming platforms, political activism, and more. It has a strong focus on employability through an emphasis on skills development for the Creative Industries, both in Ireland and internationally. Fís Éireann / Screen Ireland recently revealed that €500 million was spent in 2021 in the Irish economy across film, television drama, documentary and animation production, the highest spend ever achieved supporting over 12,000 local jobs, with growing demand for new graduates with relevant qualifications. In addition, Drama, Film, and Theatre Studies will be introduced as a new Leaving Certificate teaching subject from 2024 and our programme aligns directly with this new subject for those wishing to pursue a teaching career at second level. The programme also provides the opportunity for students to apply to transfer into the denominated degree programme in Drama after First Year (subject to exam performance and availability of places), should they wish to do so.
Research	
People	
Location	
Courses	
Departments and Centres	
Postgraduate	
SEMCA Newsletters	<b><a href="#">Performance and Screen Studies Course Outline</a></b>
Performance and Screen Studies	<a href="#">Year 1 Student Handbook Performance and Screen Studies 2025-2026</a>  <a href="#">Year 2 Student Handbook Performance and Screen Studies 2025-2026</a>  <a href="#">Year 3 Student Handbook Performance and Screen Studies 2025-2026</a>   <a href="#">Visiting Students Handbook Performance and Screen Studies 2025-2026</a>





OLLSCOIL NA GAILLIMHÉ  
UNIVERSITY OF GALWAY

# What is Performance Studies?

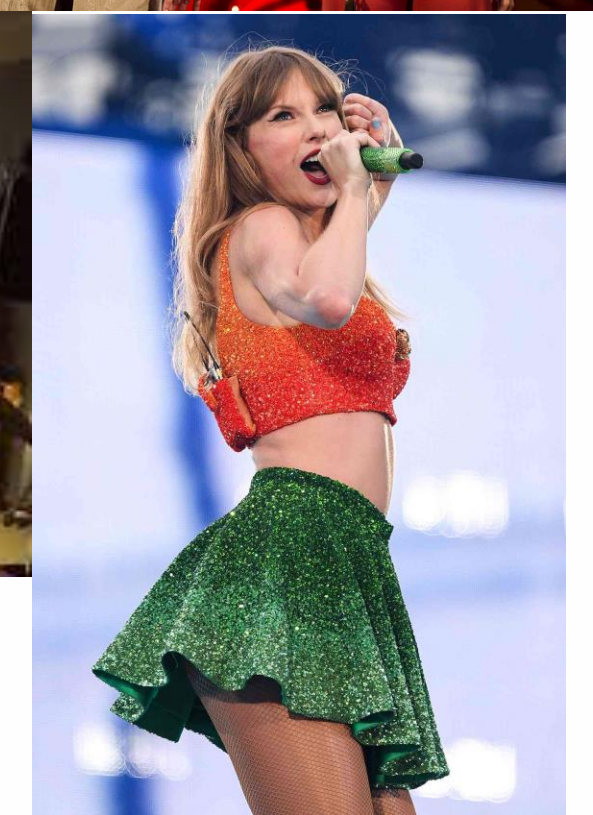


# Performance Studies...

...involves the multidisciplinary exploration of established performing arts (Drama, Film, Television, etc) while branching into other forms of public performance (such as social media, sporting events and sports media, political activism, and more).



*Clockwise: Paris Olympics, Black Lives Matters co-founder Patrisse Cullours, Hetain Patel and Yuyu Rau, Taylor Swift in Ireland, intimacy coordinators on the set of "Normal People," and members of Extinction Rebellion.*





# Performance Studies...

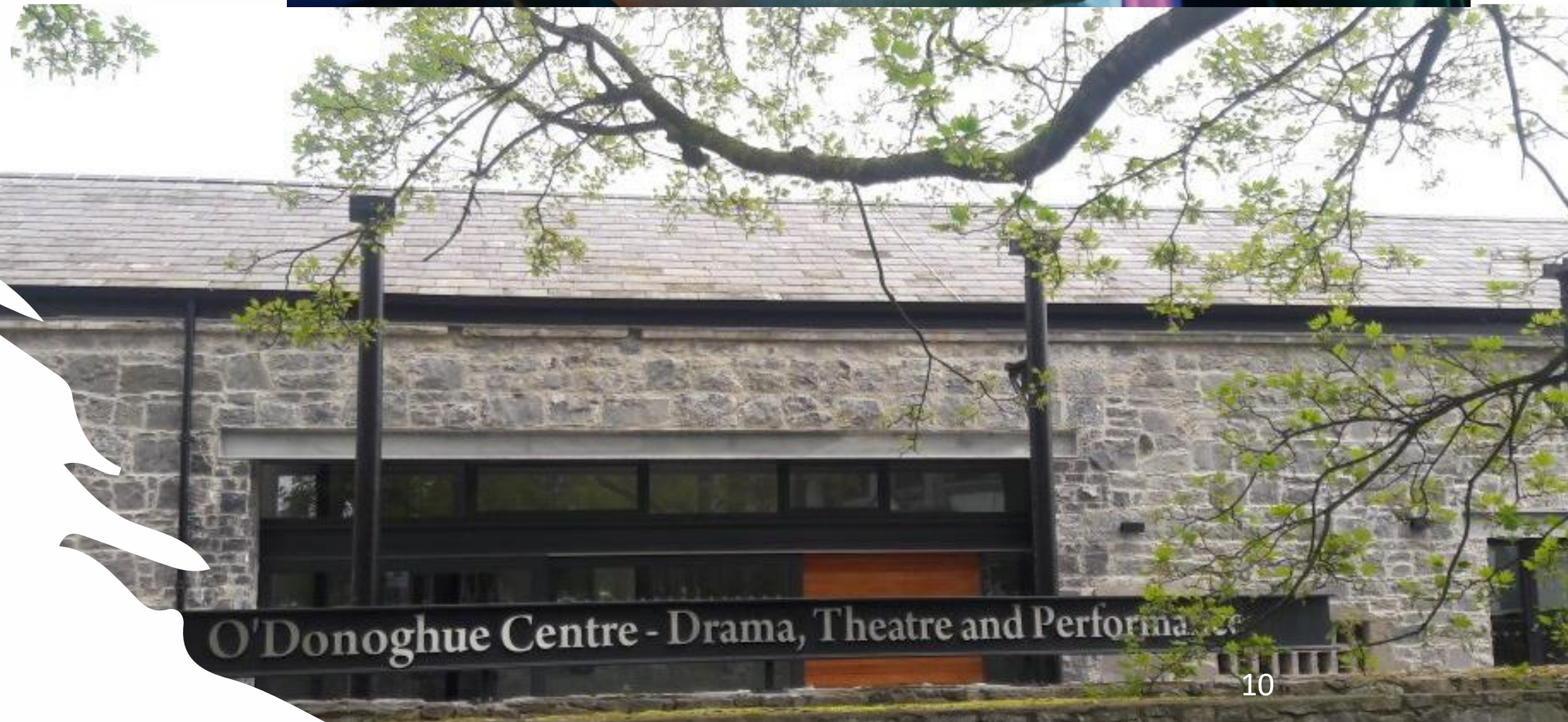
...is taught in universities internationally but has never before been offered as a subject in Ireland.





# Performance Studies...

Builds upon University of Galway's excellence in the area of Drama and Theatre Studies which is now ranked in the **TOP 100 Performing Arts Subjects** worldwide in the QS World University Rankings 2024.







OLLSCOIL NA GAILLIMH  
UNIVERSITY OF GALWAY

# What is Screen Studies?

University  
ofGalway.ie





# Screen Studies

The study of film and other screen media including television and platform / streaming

It involves discussion of texts and the contexts in which screen media are produced – social, political and cultural.



# Screen Studies...

Builds upon University of Galway's excellence in the area of Film Studies at the Huston School of Film & Digital Media



**HUSTON**  
SCHOOL *of* FILM  
& DIGITAL MEDIA



United Nations  
Educational, Scientific and  
Cultural Organization



Designated  
UNESCO Creative City  
in 2014





# Why University of Galway?



OLLSCOIL NA  
GAILLIMHE  
UNIVERSITY  
OF GALWAY

- Partnerships with arts organisations – Druid, Galway International Arts Festival, and many more.
- As a UNESCO City of Film and the home of the Screen Ireland, Galway is situated at the heart of Ireland's creative and cultural sector
- Creative arts on-campus: Arts in Action, student societies, professional artists and producers on staff
- Galway as Ireland's unofficial cultural capital!







OLLSCOIL NA GAILLIMHE  
UNIVERSITY OF GALWAY

# Why study both together?

- Reflects the way in which creative arts professions now operate.
- The pandemic has shown that old boundaries are breaking down.
- Opportunities in the west of Ireland, nationally and internationally.
- Allows you to develop the skills needed for the creation of sustainable creative enterprises in local, national and international contexts



## Performance and Screen Studies

University  
ofGalway.ie





OLLSCOIL NA GAILLIMHE  
UNIVERSITY OF GALWAY

# How does it work?

- A three-year programme, taken as part of the Arts Degree
- In First Year, you study it as one of your three subjects.
- In second and final year, you study it with ONE other subject
- Can be taken with denominated degrees in Drama, Music, Creative Writing
- Located in Arts Subjects Group 2, allowing you to study it with English, languages, Sociology and Politics, and more.



## Performance and Screen Studies

University  
ofGalway.ie



# Subject Combinations

Subject Menu			
Group 1	Group 2	Group 3	Group 4
<u>Archaeology.</u> <u>French</u> <u>Mathematics and Mathematical Studies</u>	<u>Law</u> <u>Psychology.</u> <u>Celtic Civilisation</u> <u>Performance and Screen Studies</u>	<u>Ancient Classics</u> <u>Geography.</u> <u>German</u> <u>Léann na Cumarsáide</u> <u>Modern Irish Culture (Music and Literature).</u> <u>Global Media</u>	<u>English</u> <u>Economics</u>
<u>Group 6</u>	<u>Group 6</u>	<u>Group 7</u>	<u>Notes:</u>
<u>Sociological and Political Studies</u> <u>Information Technology.</u> <u>Léann an Aistriúchán</u>	<u>History.</u> <u>Spanish</u>	<u>Gaeilge</u> <u>Italian</u> <u>Philosophy.</u>	You may only choose one subject from each of the seven subject groups.



FROM MICHAELA COEL THE CREATOR OF CHEWING GUM

FIND YOUR WAY FORWARD.  
FIND YOUR WAY BACK.

# I MAY DESTROY YOU

A NEW SERIES **HBO**  
JUNE 7 AT 10:30 PM  
AND STREAM IT ON **HBOMAX**

What modules will I  
take and how will I  
learn in this  
subject?



OLLSCOIL NA GAILLIMHE  
UNIVERSITY OF GALWAY



# Year One modules:

## *Building a common vocabulary*

In semester one, all students take **PSS1102 Acting and Performance Processes: From Everyday Life to Stage and Screen(s)** and **FS101 Introduction to Film Studies 1: Form**.

In semester two, all students take **FM1100: Introduction to Visual Culture** and **PSS1101: Performing and Screening Ireland**.

# Practices of Looking

THIRD EDITION

AN INTRODUCTION TO VISUAL CULTURE

Marita Sturken | Lisa Cartwright



OXFORD  
UNIVERSITY PRESS

<b>Class</b>	<b>Semester</b>	<b>Day, Time and Venue</b>
PSS1102 Acting and Performance Processes: From Everyday Life to Stage and Screen(s)	1	<b>Monday 4-5pm O'Donoghue Theatre</b>  <b>Wednesday 3-4pm O'Donoghue Theatre, Rehearsal Room 1, Seminar Room 1 (breakout tutorials)</b>
FS101 Introduction to Film Studies 1: Form	1	<b>Wednesday 9-10am Martin Ryan Annex 201</b> <b>Thursday 4-5pm Martin Ryan Annex 201</b> <b>Weekly Screening: Tuesday 6-7:30 pm - AMB-1023 Mairtin O' Tnuthail Theatre [Arts Millennium]</b>
FM1100 Introduction to Visual Culture	2	<b>Wednesday 9-10 am, CSB-1005</b> <b>Thursday 4-5pm CSB -G005</b>
PSS1101 Performing and Screening Ireland	2	<b>Monday 4-5pm Bank of Ireland Theatre</b> <b>Wednesday 3-4PM, Bank of Ireland Theatre</b>



# How will I learn in year two and final year?



OLLSCOIL NA GAILLIMHE  
UNIVERSITY OF GALWAY



You will have more module optionality in second and final year.

Some modules will have smaller class sizes and some of your modes of assessment will become more diverse (moving more towards portfolio and project work).

You can combine PSS with other subjects to enhance your practical experiences in the area and avail of opportunities in those subjects like studying abroad and/or work placement.



## Year Two:

-> *Broadening your knowledge*

*[Two core, choose four electives]*



### ***You must take:***

- Introduction to Film Theory (CORE)
- Theory for Performance Studies(CORE)

### ***Electives may include:***

- Design Practices for Stage, Screen and Creative Industries
- Playwriting and Screenwriting
- Digital Storytelling
- Sport and Performance
- Themes in European Cinema
- Literatures and the Environment



**Final Year** -> *Specialising for your future*

Module choices may include...



***You must take:***

- Performance and Screen Studies Capstone Project I : Research Methodologies (CORE)
- Performance and Screen Studies Capstone Project II: Thesis Project (CORE)
- Applied Performance in Social, Educational and Community Contexts (CORE)

***Electives may include:***

- Applied Film Studies
- Screening Ireland
- Sport and Cinema
- Gender & Sexuality Onscreen
- Documentary and Creative Non-Fiction Onscreen
- Early & Silent Cinema





OLLSCOIL NA GAILLIMHE  
UNIVERSITY OF GALWAY

For more in-depth module  
information on year two  
and final year,  
visit our website and  
review the second and  
final year handbooks.

University  
ofGalway.ie





# Pathways to Secondary School Teaching with Performance and Screen Studies as a subject

A Leaving Certificate subject in Drama, Film and Theatre Studies was introduced in September 2025 for fifth-year students.

If you are considering a career as a secondary school teacher following graduation, you can carry credits from this subject forward into a Professional Master's of Education programme to ultimately receive your teaching qualification.

However, please note that you will also need a SECOND teaching subject to degree level during your BA.

You can find out more from the Teaching Council about the process of becoming a post-primary teacher and about eligible teaching subjects [here](#).

If you are considering this career option, we presently advise you take the following elective modules over the course of your study with us in addition to PSS core modules:

## Year Two

- ☐ PSS2105: Playwriting and Screenwriting

## Final Year:

- ☐ FS316: Film Studies Research Project: Applied Film Studies

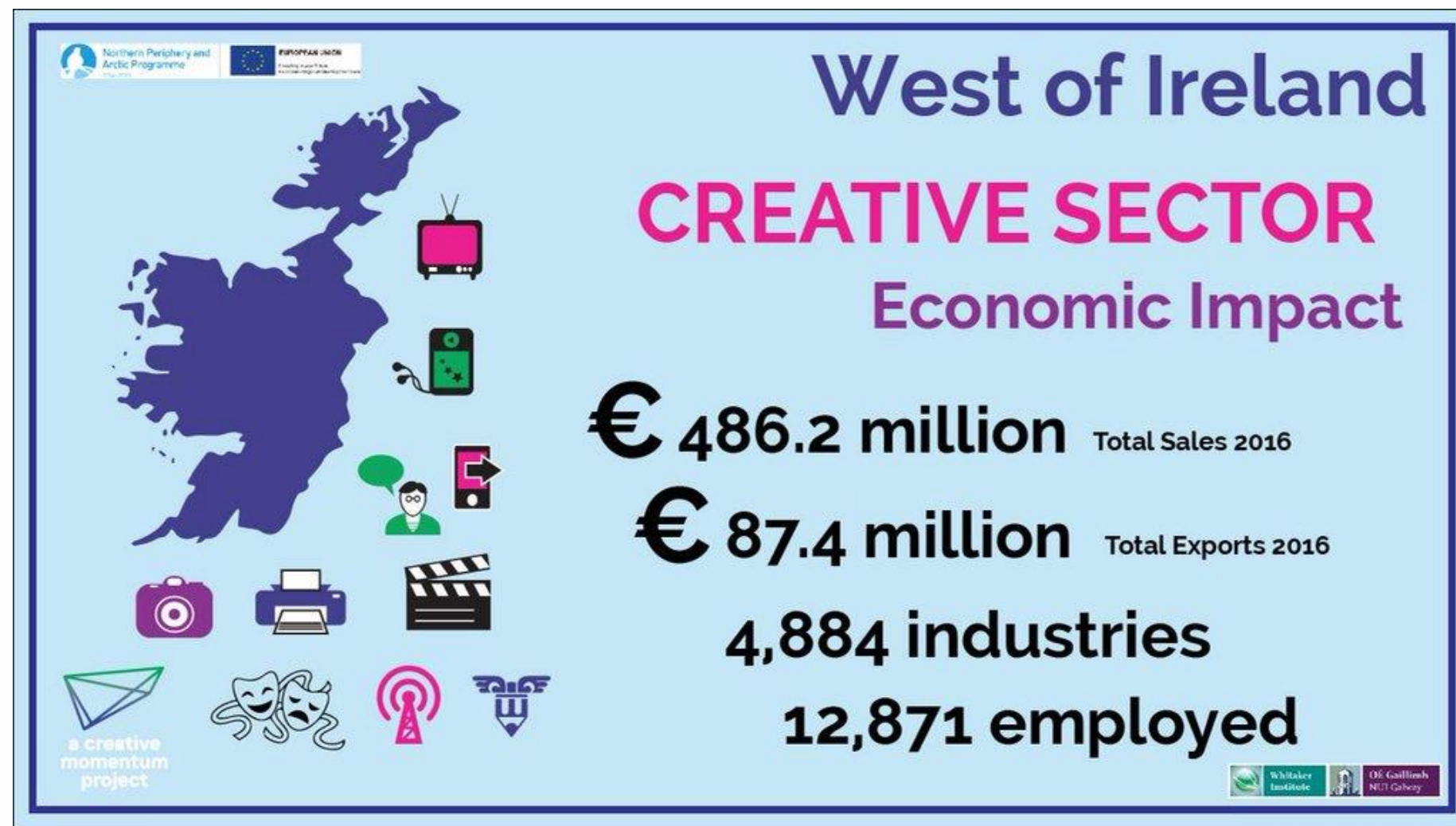


OLLSCOIL NA GAILLIMHE  
UNIVERSITY OF GALWAY



# After I graduate?

- Creative Industries
- Creative producing
- Arts management
- A career in academia
- All the benefits of an arts degree:
  - Teaching
    - *Drama, Film and Theatre Studies is now a Leaving Cert subject from 2025-2026.*
  - Public Service
  - Tourism and Heritage
  - Business
  - Information Technology







OLLSCOIL NA GAILLIMHE  
UNIVERSITY OF GALWAY

# Module Material, Submitting Work and Guidelines/Policies





OLLSCOIL NA GAILLIMHE  
UNIVERSITY OF GALWAY

Access Canvas and  
FAQs for students  
and staff here:

<https://www.universityofgalway.ie/information-solutions-services/services-for-students/canvas/>







# Using the Reading List on Canvas for modules

2025-2026

Home

Announcements

Syllabus

Library Reading List

Modules

Discussions

Assignments

Grades

Quickly Attendance

Smart Search

Course Analytics

Files

People

Pages

Outcomes

Rubrics

Quizzes

Collaborations

Settings

≡

2526-PSS1102 > Library Reading List

HomeMy ListsMy BookmarksFeedbackCharlotte MclvorCM ⓘ

Our automated matching has not found a list which is an exact match, here are some suggestions, or you can search for an alternative list

PSS1102: Acting and Performance Processes: From Everyday Life to Stage and Screen(s)

Publish

PUBLISHED

This list is live, students can see latest changes. ✓ Changes saved

ACADEMIC YEAR 2025/26

🕒 Created 23 days ago | Updated 23 days ago

Edit ▾View & Export ▾✓ My Lists ⓘ

**Description:** This module is an introduction to theories of acting and performance from a range of historical and contemporary contexts combined with an opportunity to experiment with basic acting and performance techniques and concepts. We explore what it means to “act” and whether there is a difference between acting and performing and why that distinction matters. We do so by drawing on the wider field of Performance Studies to consider not only the role of the actor and acting in artistic performance (like theatre and/or film) but broaden to a consideration of performance and how we are performing in everyday life (like on social media and/or in ritual and politics). We also examine how understandings of acting and performance differ between social, cultural and historical contexts and have evolved over time. We will begin from a Western European/North American context but then crucially extend this discussion to other Global Majority contexts. Crucially, we also foreground the question of whether we’re all always acting/performing, regardless of whether or not we work in the creative industries or if we’re simply with family, friends, employers or engaged in social media and/or the digital world. This module ultimately both outlines and critically examines a range of types of performance processes that utilize the skills of an actor and/or performer with the aim of deepening and expanding our knowledge of how, where and why actors and/or performers are at work.

Table of Contents ▾Type: All ▾Filter: All ▾Citation Style: None ▾

Search

🔍

Week One: “We are all the horse”: What is Acting? What is Performance?

⋮

Performance studies: an introduction

Book - by Richard Schechner - 2020 - Fourth edition - Core ▾

VIEW ONLINE

↕

⋮

📖 'Performance Processes' in Performance Studies: An Introduction. Third Edition. Media Editor Sara Brady. London and New York: Routledge, 2020.

Performance

Book - by Diana Taylor; Abigail Levine - 2016 - Core ▾

VIEW ONLINE

↕

⋮

University  
ofGalway.ie

# Academic Integrity

You can refer to the University's policy on Academic Integrity (QA220) here:

<https://www.universityofgalway.ie/media/registrar/docs/QA220-Academic-Integrity-Policy-Final.pdf>



OLLSCOIL NA GAILLIMHÉ  
UNIVERSITY OF GALWAY





OLLSCOIL NA GAILLIMHE  
UNIVERSITY OF GALWAY

# AI and Assessment

We will critically study the rise and use of AI across this subject.

However, unauthorised use of artificial intelligence is not permitted in your assessments.

Your module outlines or assessment tasks will indicate ONE of the below:

1. Acceptable and unacceptable uses of GenAI
2. Use of GenAI prohibited
3. Use of GenAI accepted or encouraged







OLLSCOIL NA GAILLIMHE  
UNIVERSITY OF GALWAY

# When can students submit work late?

Students should ONLY seek to submit work late in the event of serious extenuating circumstances which is defined by university policy QA209 as “serious unavoidable, unpredictable and exceptional circumstances outside the control of the student, which may negatively impact the student’s performance in assessment.”

A full list of what DOES and DOES not count as extenuating circumstances is available here:

<https://www.universityofgalway.ie/media/registry/exams/policiesprocedures/QA209-Extenuating-Circumstances.pdf>.







OLLSCOIL NA GAILLIMHE  
UNIVERSITY OF GALWAY

Students with approved extenuating circumstance can ask for and receive extensions ONLY from Head of Year/Programme (less than seven days, with documentation) OR CASSCS.



If students have met the grounds for extenuating circumstances, they will seek either:

1. **An extension:** This is when the College of Arts Office and/or Head of Year/Programme allows you to submit work late without penalty following a process of application with documentation (I.e. medical or other certificates).
2. **A deferral:** This is when you get College of Arts Office permission to submit outstanding work following the end of a module without penalty in the autumn exam



# What happens if a student fails a module?

**You will have to undertake a repeat.**

When you fail a module, students have to complete a repeat assignment or exam in the autumn exam period which constitutes 100% of your total assessment. If they are in years 2, 3, or 4 of your programme, their repeat results are capped at 40%. They must pay fees for each module they repeat.





OLLSCOIL NA GAILLIMHE  
UNIVERSITY OF GALWAY

FYI: Any student who needs to submit work more than seven days late can **ONLY** have this decision cleared by the College of Arts unless they have an accommodation from Disability Support Services.



# What is an “accommodation” and how do I know if I should have one?

- “Students with a disability are entitled, under law, to reasonable accommodations to enable them to participate on more equal terms with their peers. Supports and reasonable accommodations are determined through an individual needs assessment, taking into account the nature and impact of the disability, evidence of disability, and course requirements.”
  - *Learn more about the range of services available through the Disability Support Services at University of Galway here: <https://www.universityofgalway.ie/disability/>*
- *Accommodations might look like:*
  - Additional time for examinations or continuous assessments
  - Permission to record sessions
  - Access to Assistive technologies
  - A note taker or SNA (special needs assistant)





# Pre-disclosure of accommodation and/or access needs for Performance and Screen Studies Students:

This optional confidential form allows students to individually disclose accommodation, access, and/or additional needs that teaching staff need to be aware of **IN ADDITION** to engaging with university and/or other services such as disability support services (<https://www.universityofgalway.ie/disability/>).

We created this form so that we as staff:

- Could have information immediately in the academic year
- Could store and disseminate information centrally to relevant staff minimising students' need to disclose to multiple people multiple times
- Could identify areas where we need to bring these needs into consideration in relationship to our own class planning of activities, etc. as early as possible





# Access needs vs. accommodation vs. additional needs or circumstances

- An **access need** is something that needs to be taken into account for a learner to fully participate in class activities or that may present a challenge to them doing so (i.e. hearing or vision impairment, limited mobility, sensitivity to loud noises, bright lights, etc., chronic medical condition etc.)
- An **accommodation** is a learning support/supports that Disability Support Services will ultimately green light and advise us on integrating into your assessment planning with us. Learn more here about what supports may be available to you: <https://www.universityofgalway.ie/disability/support/>. Please note you can disclose here what accommodations that you may have been granted here or at other institutions, but we WILL need a report from Disability Support Services to ACTION specific accommodations like additional time for assessments, etc.
- **Additional needs or circumstances** for you is anything relevant to our supporting your classroom attendance and participation like a change in name or pronouns, a currently challenging commute or caring responsibilities, etc.

# Pre-Disclosure of Accommodation and Access Needs Form:

The screenshot shows a Google Forms interface. At the top, the title of the form is 'Performance and Screen Studies Programme Pre-Disclosure of Access, Accommodation, and/or Additional Needs or Circumstances 2025-2026'. Below the title, there is a text area with the following content:

This optional confidential form allows students to individually disclose accommodation, access, and/or additional needs that teaching staff need to be aware of **IN ADDITION** to engaging with university and/or other services such as disability support services (<https://www.universityofgalway.ie/disability/>).

We created this form so that we as staff:

- Could have information immediately in the academic year
- Could store and disseminate information centrally to relevant staff minimising students' need to disclose to multiple people multiple times
- Could identify areas where we need to bring these needs into consideration in relationship to our own class planning of activities, etc. as early as possible

An **access need** is something that needs to be taken into account for a learner to fully participate in class activities or that may present a challenge to them doing so (i.e. hearing or vision impairment, limited mobility, sensitivity to loud noises, bright lights, etc., chronic medical condition etc.)

An **accommodation** is a learning support/supports that Disability Support Services will ultimately green light and advise us on integrating into your assessment planning with us. Learn more here about what supports may be available to you: <https://www.universityofgalway.ie/disability/support/>. Please note you can disclose here what accommodations that you may have been granted here or at other institutions, but we WILL need a report from Disability Support Services to ACTION specific accommodations like additional time for assessments, etc.

**Additional needs or circumstances** for you is anything relevant to our supporting your classroom attendance and participation like a change in name or pronouns, a currently challenging commute or caring responsibilities, etc.

This form is for basic informational purposes only and we encourage you to engage with on and off-campus

You will be sent an email with a link to this form via announcements on PSS1102: Acting and Performance Processes if you register for this module and this subject.



OLLSCOIL NA GAILLIMHE  
UNIVERSITY OF GALWAY



# Student should register with our Disability Support Services if they have a diagnosis of...

- Attention Deficit Disorder (ADD) / Attention Deficit Hyperactivity Disorder (ADHD)
- Autism Spectrum Disorder including Asperger's Syndrome
- Blind/Visual Impairment
- Deaf/Hard of Hearing
- Dyspraxia/Developmental Co-ordination Disorder (DCD)
- Mental Health Condition
- Neurological Condition
- Physical Disability
- Significant On-going Illness
- Specific Learning Difficulty (including dyslexia or dyscalculia)

From <https://www.universityofgalway.ie/disability/faqs/>



OLLSCOIL NA GAILLIMHE  
UNIVERSITY OF GALWAY



OLLSCOIL NA GAILLIMHE  
UNIVERSITY OF GALWAY

# For students struggling with mental health challenges

- The University of Galway counselling service provides support information to staff here on basic language and engagement strategies here including the Students in Distress Information Booklet: <https://www.universityofgalway.ie/counsellors/staff-information/>.
- Students can find information on booking counselling at the service here: <https://www.universityofgalway.ie/counsellors/self-help/appointments/>
- Other helpful resources to refer students to which may offer immediate relief include:
  - Crisis Text Line - Text GALWAY 50808 (free-text 24/7)
  - The Student Health Unit [healthunit@universityofgalway.ie](mailto:healthunit@universityofgalway.ie)
  - UCHG Emergency Department 091 544556
  - Samaritans 116 123 (freephone 24/7)
  - Pieta House help line 1800 247 247 (freephone 24/7)
  - Togetherall – Anonymous Mental Health Support App [togetherall.com/en-ie](https://togetherall.com/en-ie)
  - Speak Out – Online Anonymous Report & Support Tool [unigalway.speakout.ie](https://unigalway.speakout.ie)





OLLSCOIL NA GAILLIMHE  
UNIVERSITY OF GALWAY

# College of Arts Student Advisor Service

Students also have access to a College of Arts Student Advisor, Rosemary Crosse, for students in distress and/or seeking immediate academic support.

This service “provide[s] confidential, non-judgmental support and an empathetic space for students to share their concerns. In addition, a student advisor can offer personal support and advice on topics such as study planning, time management and any personal challenges that may compromise their ability to study.”

You can learn more here about how they book appointments and are supported through this avenue here: <https://www.universityofgalway.ie/artsstudentadvisor/>



OLLSCOIL NA GAILLIMHE  
UNIVERSITY OF GALWAY

# Supports for Students at the University of Galway

A full map of Student Support Services is given here and more in-depth information listed in most handbooks for the discipline/programme you are teaching into:

[https://www.universityofgalway.ie/media/collegeofartsocialsciences/celticstudies/CASSCS\\_StudentSupportMapReadOnly.pdf](https://www.universityofgalway.ie/media/collegeofartsocialsciences/celticstudies/CASSCS_StudentSupportMapReadOnly.pdf)



# If work IS late and has not been granted extension, deferral and/or accommodation:

**Late work** that does not meet the grounds for an extension , deferral or accommodation or is simply late **will be penalised at two points per day including weekends and bank holidays.**

Late work penalties can still apply even if they are granted an extension if their documentation does not cover an additional period of lateness. For example, if they provide a cert saying that they were sick for two days, then they can hand in their work two days late without penalty. But if their cert says they were sick for two days and they hand in a week late, they will lose marks for five days.

Work that is any more than two weeks' late (14 days) cannot be accepted even if students have medical certificates etc. without a deferral from College Office. Students whose work has not been submitted by this time will automatically be listed as having failed or must seek permission from the College Office to defer the assessment.

**Check with your Head of Year/Programme as to whether you should APPLY the late penalty or state the number of days late in notes when submitting marks to them.**



OLLSCOIL NA GAILLIMHE  
UNIVERSITY OF GALWAY



OLLSCOIL NA GAILLIMHE  
UNIVERSITY OF GALWAY

# Questions, Course Feedback and the Student Voice

University  
ofGalway.ie





# You can ask questions or give feedback about this programme or your modules by:

- Participating actively in class
- Approaching a teacher after class
- Emailing a teacher (with expectation of 48-72 hours response time)
- Visiting the teacher during office hours (see module outlines, Canvas and/or email for appointment)
- Speaking to a class rep (more information on the next slide)
- Filling out your module feedback forms when offered during and at the end of term
- Responding to any other in-class polls or surveys offered by the teacher during term



# Class Rep System

Class rep elections happen through the Student Union:  
<https://yourspace.universityofgalway.ie/entities/classrepresentative>

Notify Seán once you have elected your class reps and there will be TWO meetings each term, mid-way and end of term.





OLLSCOIL NA GAILLIMHÉ  
UNIVERSITY OF GALWAY

Additional  
student services  
and supports at  
the University of  
Galway are listed  
in your  
handbook.

University  
ofGalway.ie





OLLSCOIL NA GAILLIMHE  
UNIVERSITY OF GALWAY

# Any questions?





OLLSCOIL NA GAILLIMHE  
UNIVERSITY OF GALWAY

**ONLINE:**

<https://www.universityofgalway.ie/colleges-and-schools/arts-social-sciences-and-celtic-studies/english-media-creative-arts/performanceandscreenstudies/>

**Head of First Year:** Dr Seán Crosson

**Email:** [sean.crosson@universityofgalway.ie](mailto:sean.crosson@universityofgalway.ie)

If you have any queries, please do not hesitate to make contact.



**Thank you for listening.**

University  
ofGalway.ie