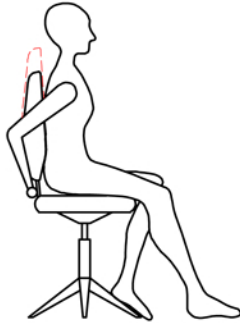
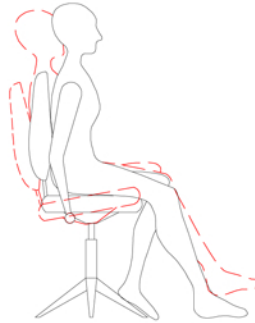


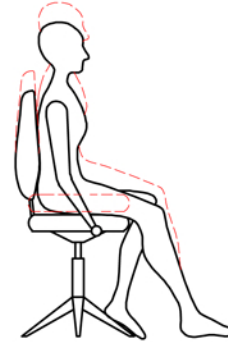
Operators Grade 2: Fabric Back LG2.2



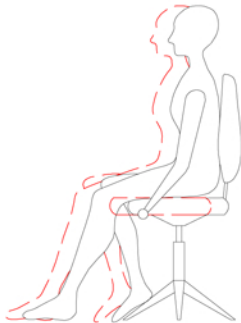
Back Height Adjustment,
Lift Backrest until ratchet engages in desired position, raise to top to reset. Aircell Lumbar, inflate using pump to increase support, deflate using purge button



Synchro Seat and Back Angle Adjustment - Rear Right Hand Paddle -
Lift paddle up to release and down to lock, Lockable in four positions, with underseat tension adjustment under seat



Seat Height Adjustment -
Front Right Hand Paddle - Lift paddle up whilst off seat to raise seat height, lift paddle whilst seated to lower seat height.



Seat Slide Adjustment -
Front Left Hand Paddle - Lift Paddle to slide seat forward, release to lock, lift again to return seat.

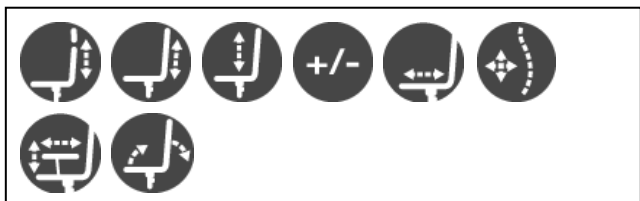


Pump out Lumbar Support -
Located below the backrest to the right. Squeeze the hand pump with right hand. To release the pressure press the button on the hand pump.





Motion and Feature Icons



Features & Benefits

- Patented product
- Height and depth adjustable lumbar support
- Posture chair – approved by a UK Chiropractic Doctor
- Multi-functional arms with height and pivot adjustment
- Polished chrome base
- Contoured foam seat and back for extra support and comfort
- Gas lift tested up to 150kg

- Usage: Task 24/7



Options

- Blue or Black fabric and Leather
- Adjustable headrest
- Matching visitor

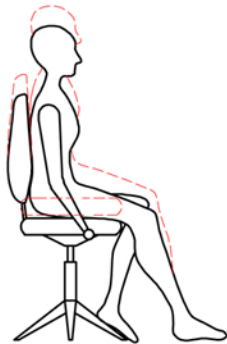
Specifications:

- Seat Width: 500mm
- Seat Depth: 520mm
- Seat Height: 460-550mm
- Seat Height on bolster: 520-610mm
- Overall Width: 670mm
- Overall Depth: 690mm
- Overall Height: 1020mm
- Arm Height: 700mm
- Back Height: 500mm
- Back Width: 485mm
- Weight: Net: 26.5kg
Gross: 30.5kg



Notes

Operators Grade 2: Mesh Back LG2.1



Seat Height Adjustment -
Right Hand Paddle - Lift
paddle up whilst off seat to raise
seat height, lift paddle whilst
seated to lower seat height.



**Synchro Seat and Back Angle
Adjustment -**
Left Hand Lever.
Press down to release and
Up to lock the tilt position.
Tension is controlled under
the seat.



Lower Back Tensioner
Inside and to the rear of the back rest.
This tightening band can be moved up
or down to position it correctly at the lower
back.



Operators Grade 1: LG1.1 + LG1.2

Under Seat adjustments:

Front Right lever Controls the height. Lifting the lever will release the mechanism

Middle Right Lever: Controls the tilt for the seat and back. Lift the lever to release the mechanism and push down to lock the tilt in the desired position.

Rear Right Lever: Controls the back tilt. Lift the lever to release the mechanism and push down to lock the back tilt in the desired position



Operators Grade 2: Mesh Back LG2.1

Under Seat adjustments:

Right hand lever: Lift to adjust seat height

Right hand lever DIAL: Located at the end of the lever. twist anti-clockwise to release the mechanism and clockwise to lock the mechanism which controls the tilt angle of the seat and back.

Back rest and seat tilt tension is adjusted under the seat.

Backrest adjustments:

Lower back tensioner can be adjusted by sliding the tensioner band up or down

Height Adjustable Arms: are set by pressing the buttons to the front underside of the armrests



Operators Grade 2: Fabric Back LG2.2

Under Seat adjustments:

Left hand lever: Lift to slide seat in and out.

Right hand lever #1: Lift to adjust seat height

Right hand lever #2: Lift to adjust back rest and seat angle. Push down to lock desired position.

Back rest and seat tilt tension is adjusted under the seat.

Backrest adjustments:

Back height adjustment is set by lifting the back & setting in 8 positions, the 9th and highest position returns backrest to the original setting.

Height Adjustable Arms: are set by lifting outermost levers.

Pump out lumbar support and release button located to the rear and right of back rest.



Operators Grade 3: LG2.3

Under Seat adjustments:

Left Lever: Controls the tilt function DOWN to release & UP to lock position

Under seat Knob: Twist knob to control tilt TENSION

Right Lever: Controls the Height

Back and Headrest adjustments:

Backrest height: Press lever between the 2 chrome bars and lift or drop the backrest.

Headrest height: The headrest is on a ratchet mechanism. Push up or Pull down while sitting.

Lumbar: Support for the lower back can be adjusted by twisting the knob on the backrest to the right.

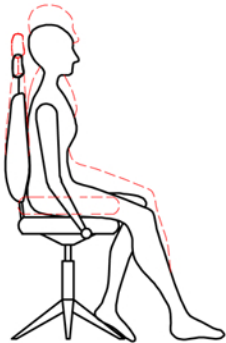
Arm rest adjustments:

Height: Press button beneath the pad to adjust.

Width: Press lever underneath the armrest unit to adjust the width.



Operators Grade 3: LG2.3



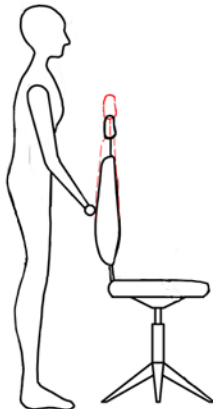
Seat Height Adjustment -
Right Hand Paddle - Lift
paddle up whilst off seat to raise
seat height, lift paddle whilst
seated to lower seat height.



**Synchro Seat and Back Angle
Adjustment -**
Left Hand Lever.
Press down to release and
Up to lock the tilt position.
Tension is controlled under
the seat.



Lower Back Tensioner
Right side of the back rest.
Twist Knob to adjust the lower
back tension.



Back and Headrest Height Adjustment
Rear of the back rest.
Press lever between the two chrome bars
to release the lock and adjust the height
of the backrest.

Push or Pull the headrest up or down on the
ratchet mechanism to adjust the height.

