



# Care experiences and home care preferences

for older adult  
Travellers and older  
people who have  
experienced  
homelessness



## The purpose of this Briefing Report is to

**1**  
Investigate older  
Travellers' and older  
homeless adults'  
experiences of using  
health and social care  
services.

**2**  
Establish needs and  
preferences with  
respect to home care  
delivery for the two  
groups.

## What did we do and who was involved?



# Barriers to Accessing Home Care



Too much paperwork and bureaucracy



Limiting eligibility criteria



Placing the burden on families and other supports

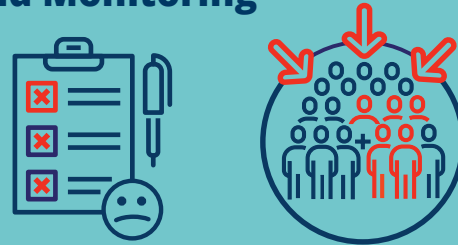


Poor environments and housing

# Recommendations

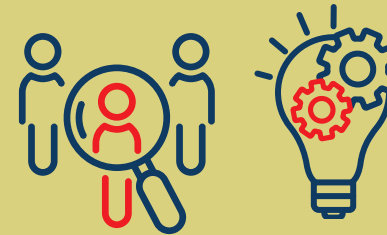
To secure more equitable care provision and home support services for older Travellers and older adults who have experienced homelessness

## Equitable Implementation and Monitoring



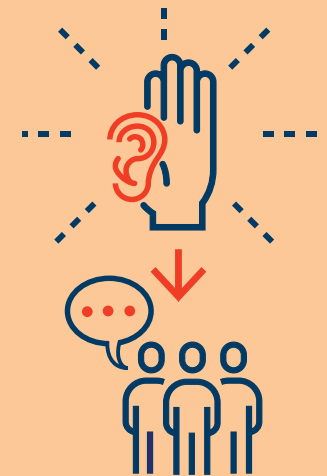
Based on need and inclusion not just age.

## Relevant and Integrative Care Values



Ensure rights to person-centred homecare.

## Meaningful Co-production, Agency and Voice



Inclusion in care service design.

## Enabling and Flexible Home Supports



Greater flexibility and range of services in home care.

## Meaningful and Secure Environments



Ensure safe and comfortable environments.

## Inclusion-Orientated Communication



Appropriate awareness and outreach campaigns.

## Training and Education for Inclusive Care



Awareness and inclusion training for carers and health professionals.