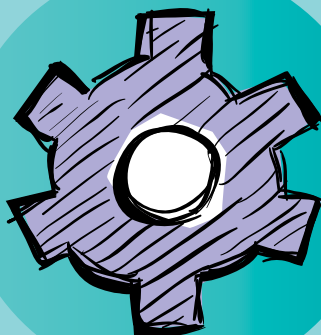




NUI Galway
OÉ Gaillimh



BE INSPIRED.
SHAPE YOUR FUTURE.

REAL
LEARNING

A-LEVEL QUICK GUIDE TO COURSES 2013

REAL LEARNING

INFORMATION FOR GCE/GCSE A-LEVELS APPLICANTS

Students intending to study an undergraduate degree programme in NUI Galway must satisfy the minimum entry requirements stipulated by the NUI for the respective Colleges and also any additional requirements for particular programmes. All subjects must be recognised for matriculation purposes as follows:

Matriculation

NUI Galway welcomes applicants presenting General Certificate of Education (GCE) and General Certificate of Secondary Education (GCSE) results. To matriculate, students presenting GCE and GCSE examinations must obtain a pass in at least six recognized subjects in accordance with programme requirements, as well as obtaining the following:

GCE:

At least a Grade C at Advanced Level in two recognised subjects (Grade A with Grade E, or Grade B with Grade D, are considered equivalent of two Grade Cs).

GCE AS Level/GCSE:

At least a Grade C in four recognised subjects. The results of Leaving Certificate and GCE/ GCSE examinations may not normally be combined for purposes of application.

Acceptable subjects

Not all GCE and GCSE subjects are recognised and some subjects may not be accepted in combination with one another. For further information and the full list of GCE and GCSE subjects acceptable for matriculation, consult the Entry Requirements section online.

Find out more by searching for 'entry requirements': www.nui.ie

Irish Language Requirement & Exemption

If you were born outside the Republic of Ireland, you do not require Irish as a subject for entry to NUI Galway. Candidates from Northern Ireland and Great Britain presenting GCE/GCSE qualifications will automatically be granted exemption from Irish and are not required to apply to the NUI for exemption.

How to compare A-Level grades with points

Where a Leaving Certificate grade of Ordinary B3 is required, the minimum requirement is a Grade B at GCSE.

Where a Leaving Certificate grade of Higher C1/C2/C3 is required, the minimum requirement is a Grade C at GCE A-level.

Where a Leaving Certificate grade of Higher B1/B2/B3 is required, the minimum requirement is a Grade B at GCE A-level.

GCE/LC points equivalence from 2010

A2	Points	AS	Points
A*	150	—	—
A	135	A	65
B	120	B	60
C	100	C	50
D	75	D	35
E	40	E	20

GCE/LC points equivalence pre 2010

A2	Points	AS	Points
A	145	A	65
B	120	B	60
C	100	C	50
D	75	D	35
E	40	E	20

Please note that a maximum of four different recognised subjects (not being mutually exclusive) may be considered for scoring purposes. AS grades, if presented, will normally only be accepted for the year immediately preceding the grades in the A2 subjects. Grades in the same subject in A2 and AS level cannot be combined. Only GCE grades awarded at the same date can be considered for computation. AVCE subjects, or those titled as applied subjects, are NOT currently accepted for matriculation or entry purposes. Please refer to our website for approximate minimum A-level grades required for entry in 2012.

Find out more:

www.nuigalway.ie/admissions

A-Level quick guide to courses 2013



Full-time undergraduate honours degree courses minimum A-Level entry requirements and additional requirements (GCSE and GCE exams).

Course Code	Programme name	English	Maths	Second language †	Lab science subject ‡	Other subjects ‡	Additional requirements	Minimum A-Level Grades or equivalent combinations †	CAO Points 2012 †
GY101	Arts (Omnibus)	●		●		4		CCC	300
GY103	Arts (Public and Social Policy)	●		●		4		CCC	300
GY104	Arts (Psychology)	●		●		4		AAAB	525
GY105	Arts (History)	●		●		4		BCC	320§
GY106	BA (Cumarsáid)	●		●		4	Grade C in A-Level Irish	BBB	350
GY107	BA (Gaeilge agus Léann an Aistriúcháin)	●		●		4	Grade B in A-Level Irish	BBB	345
GY109	Arts (Mathematics and Education)	●		●		4	Grade C in A-Level Mathematics or Grade A at O-Level. Students must satisfy the Police/Garda vetting requirements.	AAA	405
GY110	Arts with Children's Studies	●		●		4	Students must satisfy the Police/Garda vetting requirements.	ABB & c (AS)	420
GY111	Arts with Creative Writing	●		●		4		A*A*A* & c (AS)	490
GY112	Arts with Film Studies	●		●		4		AAB	390
GY113	Arts with Human Rights	●		●		4		ABB & c (AS)	425
GY114	Arts with Irish Studies	●		●		4		CCC	300
GY115	Arts with Performing Arts Studies	●		●		4		BBB & c(AS)	410
GY117	Arts with Latin American Studies	●		●		4		BCC	305
GY118	Arts (Drama, Theatre and Performance Studies)	●		●		4		AAB & b(AS)	450
GY120	Arts (Youth and Family Studies)	●		●		4		CCC	300
GY201	Commerce	●	●	●		3			BBC
GY202	Commerce (International with French)	●	●	●		3	Grade B in A-Level French	A*A* A & b (AS)	495
GY203	Commerce (International with German)	●	●	●		3	Grade C in A-Level German	AAA	405
GY204	Commerce (International with Spanish)	●	●	●		3	Grade C in A-Level continental language	BBB & c (AS)	410
GY206	Business Information Systems	●	●	●		3		ABB	370
GY207	Commerce (Accounting)	●	●	●		3	Grade C in A-Level Accounting	AAB & c (AS)	420
GY250	Corporate Law	●	●	●		3		ABC	350

Notes

† Students who are certified to the university by the appropriate professional authority as having a serious hearing impairment are exempt from the "second language" requirement, and are permitted to matriculate as follows: English and any other five subjects recognised for matriculation registration purposes, provided College requirements are otherwise satisfied.

‡ Chemistry, Physics, Biology, Physics with Chemistry (joint) or Agricultural Science. For the College of Engineering and Informatics degree programmes (GY401 to GY414 and GY350), Technology may be accepted as an alternative to a science subject.

» GY309 is an inter-college programme of the College of Business, Public Policy and Law and the College of Science. The matriculation of either College may be applied, whichever is the more advantageous to the applicant.

Course Code	Programme name						Additional requirements	Minimum A-Level Grades or equivalent combinations [§]	CAO Points 2012 [§]
		English	Maths	Second language †	Lab science ‡	Other subjects ‡			
GY251	Civil Law	●		●		4		AAA	405
GY301	Bachelor of Science	●	●		●	3		AAB	380
GY303	Biomedical Science	●	●		●	3		A*A*AB	550
GY304	Biotechnology	●	●	●	●	2		AAB & b (AS)	445
GY308	Environmental Science	●	●		●	3		ABB	375
GY309»	Financial Mathematics and Economics	●	●	● or ●	●	3	Grade C in A-Level Mathematics	ABB & b (AS)	430
GY310	Marine Science	●	●		●	3		AAA	400
GY313	Health and Safety Systems	●	●		●	3		ABC	345
GY314	Earth and Ocean Sciences	●	●		●	3		AAB	380
GY318	Biopharmaceutical Chemistry	●	●		●	3		A*A*A* & c (AS)	495
GY319	Mathematical Science	●	●		●	3	Grade C in A-Level Mathematics or Grade A at O-Level	A*A*A & c (AS)	485
GY320	Physics – degree options in Applied, Astrophysics, Biomedical, Theoretical	●	●		●	3		N/A	N/A
GY350	Computer Science and Information Technology	●	●		●	3	Grade D in A-Level Mathematics or Grade B in O-Level Mathematics [‡]	A*AA	415
GY401	Undenominated Engineering	●	●		●	3	Grade C in A-Level Mathematics [‡]	A*A*A	430
GY402	Civil Engineering	●	●		●	3		A*A*A	430
GY405	Mechanical Engineering	●	●	●		3		A*A*A	425
GY406	Electronic and Computer Engineering	●	●		●	3		A*A*A*	445
GY408	Biomedical Engineering	●	●		●	3		A*A*A	430
GY410	Project and Construction Management	●	●		●	3	Grade D in A-Level Mathematics or Grade B in O-Level Mathematics [‡]	BBC	325
GY411	Sports and Exercise Engineering	●	●		●	3		AAA	400
GY413	Energy Systems Engineering	●	●		●	3	Grade C in A-Level Mathematics [‡]	A*A*A	430
GY414	Electrical and Electronic Engineering	●	●		●	3		AAA & c (AS)	455

Notes

☒ The university holds an Engineering Mathematics Examination in August of each year for entry to the Engineering Programmes. Candidates who reach the appropriate standard are deemed to have satisfied the additional Honours Mathematics requirement.

§ Not all on these points were offered a place.

¶ Based on Round One 2012 CAO Points Equivalencies.

Aptitude test.

* Plus HPAT –Ireland Test results.

Course Code	Programme name	English	Maths	Second language †	Lab science subject ‡	Other subjects ‡	Additional requirements	Minimum A-Level Grades or equivalent combinations ¶	CAO Points 2012 ¶	
GY501 (6 year)	Medicine	●	●	●	●	2	Minimum A Level requirements – A*A*A* & c(AS)*from the same sitting of the A2 examination (applicants must achieve the required subjects over GCSE/ GCE and must achieve the grades in one sitting). <i>and</i> Completion of the required Admissions Test (HPAT-Ireland). Must satisfy the Garda/Police vetting and medical clearance requirements.	A*A*A* & c (AS)* In practice, successful applicants tend to have AAAA.	737*	
GY501 (5 year)	Medicine	●	●	●	●	2	In addition to the above requirements: HC3 Chemistry minimum. A merit order applies based on HC3, if any, attained in the following: Biology, Physics, Physics/ Chemistry or Agricultural Science. Refer for detail (www.nuigalway.ie/courses/undergraduate-courses/surgery-obstetrics.html)	A*A*A* & c (AS)* In practice, successful applicants tend to have AAAA.	737*	
GY502	Occupational Therapy	●	●	●	●	2	Meet any professional requirements stipulated.	AAAB	520§	
GY503	Speech and Language Therapy	●	●	●	●	2	Must satisfy the Police/Garda vetting and medical clearance requirements.	AAAB	525	
GY504	Podiatry	●	●	●	●	2		AAA & c (AS)	460	
GY515	General Nursing (Galway and Portiuncula)	●	●		●	3	Meet professional requirements stipulated by An Bord Altranais, www.nursingcareers.ie . Must satisfy medical clearance requirements. Must achieve Police/Garda vetting.	AAB & a (AS)	455§	
GY516	Psychiatric Nursing	●	●		●	3		ABB & c (AS)	420	
GY517	Midwifery	●	●		●	3		AAA & c (AS)	450§	
GY525 Mature entry	General Nursing	A separate pathway exists for mature applicants who are applying on the grounds of mature years only and not on the basis of educational achievement. Further details are available from the Nursing Careers Centre or from An Bord Altranais www.nursingcareers.ie .								#233
GY526 Mature entry	Psychiatric Nursing									#224§
GY527 Mature entry	Midwifery									#243

Dates for your diary

OPEN DAYS



Visit www.nuigalway.ie/opendays to find out more about Open Days and register online for your free Open Day pack.

INFORMATION EVENINGS

We will promote these information evenings in advance through advertising in local press, the NUI Galway website and direct contact with schools in your area.

Dublin	Thursday, 25th October 2012
Kildare	Wednesday, 14th November 2012
Athlone	Thursday, 22nd November 2012
Clonmel	Wednesday, 28th November 2012
Thurles	Thursday, 17th January 2013
Enniskillen	Thursday, 21st February 2013
Letterkenny	Wednesday, 6th March 2013
Derry	Thursday, 21st March 2013

School visits

Our Schools Liaison Officers are available to come and visit your school and give a presentation on the University and the degree programmes on offer.

Careers fairs/exhibitions

Come and meet us at many of the careers fairs/exhibitions, which take place around the country. They are organised by the Institute of Guidance Counsellors, secondary schools, local organisations etc. during the year.

Campus tours

To book a tour: visit@nuigalway.ie
T +353 91 494 145
Tours must be booked in advance.