



OLLSCOIL NA GAILLIMHE
UNIVERSITY OF GALWAY

Doctorate in Clinical Psychology Programme



University
ofGalway.ie



OLLSCOIL NA GAILLIMHE
UNIVERSITY OF GALWAY

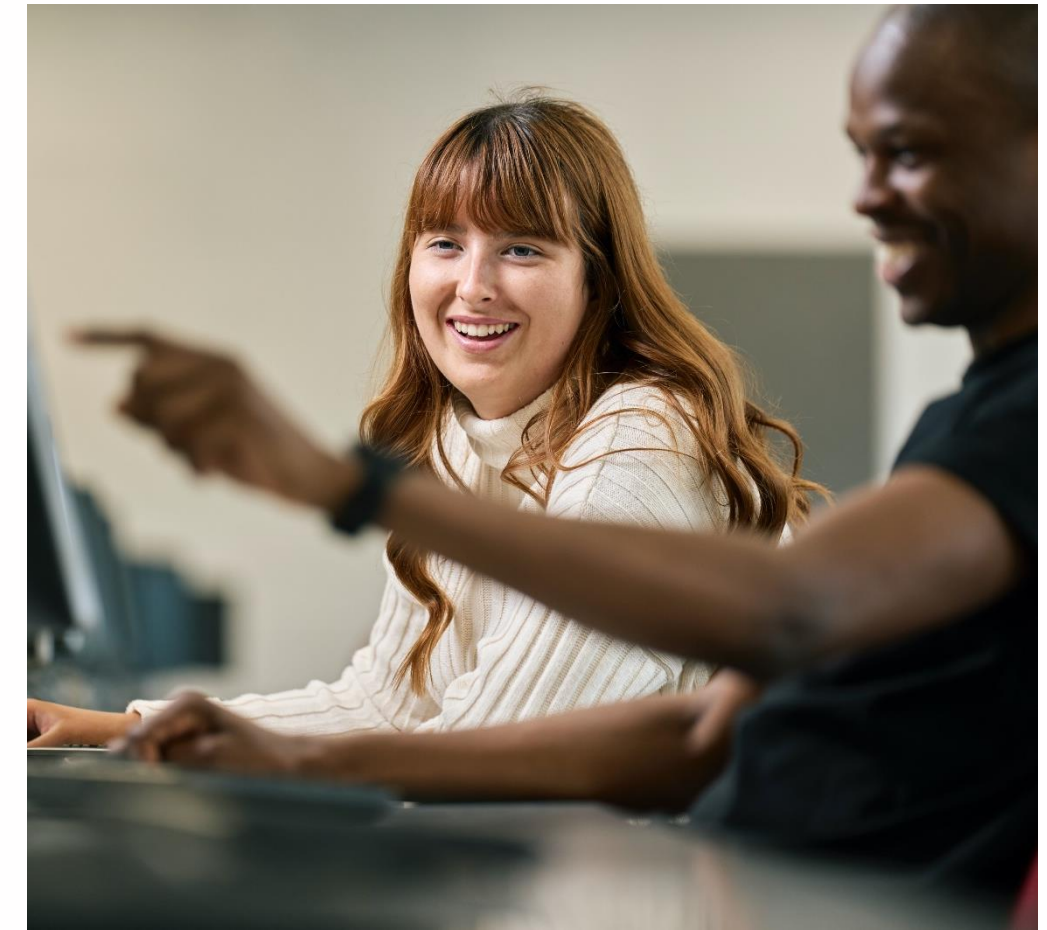
DPsychSc Programme Team

Staff Member	Title	Responsibilities
Alma Greally	Course Administrator	Timetable Management, Timesheets, Trainee File Management, University & Financial Administration
Anne O'Connor	Director of Clinical Practice	Clinical Lecturing, Placement Monitoring, Selection, Supervisor Training, Research Supervision
Kiran Sarma	Research Director	Research Coordination, Clinical Lecturing, Marks and Standards, Examinations Tutor, Research Supervision
John Bogue	Course Director	Clinical Lecturing, Placement Monitoring, Programme Administration, Financial Management, Admissions Tutor, Research Supervision
Eoin Ryan	Lecturer in Clinical Psychology / Director of PPD	Clinical Lecturing, Placement Planning, Placement Monitoring, Supervisor Training, Research Supervision, Personal and Professional Development (PPD)
Brian McGuire	Academic Director	Clinical Lecturing, Placement Monitoring, Academic Director, Research Supervision, Curriculum Review, Visiting Lecturer Training
Tom Burke	Lecturer in Clinical Neuropsychology	Clinical Lecturing, Placement Planning, Placement Monitoring, Supervisor Training, Research Supervision
Kate Moran	Lecturer in Clinical Psychology	Clinical Lecturing, Placement Planning, Placement Monitoring, Supervisor Training, Research Supervision



OLLSCOIL NA GAILLIMHÉ
UNIVERSITY OF GALWAY

Course Philosophy



- **Reflective Scientist Practitioner**
- **Eclectic mixture of theoretical models and therapeutic approaches but emphasis on CBT and other evidence-based approaches.**

Course Structure

The course runs on a full-time basis over three calendar years and includes three inter-related elements:

Approx. 100 days academic coursework comprised of main teaching blocks and smaller mid-placement teaching blocks

Approx. 400 days of supervised clinical practice over three year

Three core placements (approx. 10 months x Child, 7 months x Adult, 8 months x ID) and one 6-month elective placement

Approx. 200 days research activity – 1 day per week for study/research each year, research teaching and dedicated thesis write up time in Year 3.





OLLSCOIL NA GAILLIMHE
UNIVERSITY OF GALWAY

Core learning across all blocks

- **Psychological Assessment**
- **Psychological Disorders**
- **Psychological Intervention**
- **Psychological Research Methods**
- **Current Topics in Clinical Psychology**
- **Personal and Professional Development**



Academic Blocks

YEAR 1

Child, Adolescent and Family clinical psychology
Advanced issues in Child and Family clinical psychology
Research Skills

YEAR 2

Adult Clinical Psychology
Intellectual Disability
Research Skills

YEAR 3

Intellectual Disability, Older Adults, Neuropsychology, Forensic Psychology, Health Psychology, Professional Issues, Advanced Topics, Research Skills



OLLSCOIL NA GAILLIMHE
UNIVERSITY OF GALWAY

Research Component

Lectures and workshops on methodology, statistics and computing

Quantitative Small Scale Research Project in Year 1

Either

a Qualitative Small Scale Research Project *Or* a Systematic Review in Year 2

A research thesis (max 30,000 words) that includes a journal article in the field of clinical psychology.



OLLSCOIL NA GAILLIMHÉ
UNIVERSITY OF GALWAY



OLLSCOIL NA GAILLIMHE
UNIVERSITY OF GALWAY

Supervised Clinical Practice

1. Child and adolescent clinical psychology – c.38 weeks
2. Adult clinical psychology – c. 28 weeks
3. Learning disability – c. 30 weeks
4. Elective/Advanced Placement – c. 25 weeks





OLLSCOIL NA GAILLIMHE
UNIVERSITY OF GALWAY

Selection Process

For details on how to apply:

www.universityofgalway.ie/courses/how-to-apply/

Closing date – see webpage (**09 January 2026**)

Combined selection process with University of Limerick and
University College Cork

1. Group Exercise
2. Extended Panel Interview
4. Completion of any necessary documentation required by HSE

Interview dates: **9-13 March 2025 (in Limerick TBC)**

University
ofGalway.ie



Doctor of Psychological Science – *Entry Criteria*

Honours Degree in Psychology (or Postgraduate Higher Diploma in Psychology) of at least **Upper Second-Class Honours (2H1) level which confers eligibility for Graduate Membership of PSI**

Applications may be considered from candidates with a 2.2 level Honours degree in Psychology (or Postgraduate Higher Diploma in Psychology) only under exceptional circumstances (e.g. PhD).

Proof of eligibility for graduate membership of either Psychological Society of Ireland or British Psychological Society is always required in the case of qualifications obtained outside the Republic of Ireland or Northern Ireland. Your application will not be considered without this.

In previous years, most successful applicants have had at least 12 months FTE relevant experience as an assistant psychologist, research assistant or similar.

The University of Galway Clinical Psychology Training Programme is committed to the principle of equality of opportunity for all trainees and staff. The Programme values and positively promotes equality, inclusion and diversity.

We are actively engaged in several initiatives with other training providers and our stakeholders to ensure that our trainees reflect the wide range of diversity represented by service users. We especially want to encourage trainees with disabilities, those from culturally and economically disadvantaged and diverse groups, and from all social classes.



OLLSCOIL NA GAILLIMHE
UNIVERSITY OF GALWAY



OLLSCOIL NA GAILLIMHÉ
UNIVERSITY OF GALWAY

Important Information

You must be an EU/EEA/UK citizen or have proof of entitlement to work in the Republic of Ireland if you are not an EU/EEA/UK citizen.

An EU student is defined as an EU national (i.e. holding an E.U. passport or birth certificate) who has been ordinarily resident in an EU member state for at least three of the five years immediately preceding their entry to the third level course. Note: 'ordinarily resident' excludes residency for educational purposes.

You can check if you are eligible for EU fees here: <https://www.universityofgalway.ie/student-fees/international/>

If you obtained your qualification in psychology outside the Republic of Ireland or Northern Ireland you need to show that you are eligible for graduate membership of PSI or BPS.

Approximately 15 funded places are usually available each year. This number may increase from time to time depending on funding availability.

The intake for 2026 is expected to be 15

Trainees who are funded by the Health Service Executive receive a salary of €40,673 - €46,566 and 60% of fees paid. Fees are currently €13,085 PA but are likely to increase for AY 2025-26

We do not accept self-funded applicants at present. HSE funding is only available to applicants who are eligible for EU fees.

Garda/Police vetting is required

University
ofGalway.ie

Very Important Information !!!

Places are currently funded by HSE West - You must be prepared to complete the majority of your placements within the entire HSE West area depending upon availability. This is a very big region!

You may get little or no choice regarding placement location as placement availability is currently a major issue for all clinical psychology training programmes.

Placement locations are diverse and many placements will not be within easy commuting distance of University of Galway.

Please think carefully about whether or not you can commit to this beforehand!

Do you have a full driving licence and access to a vehicle?



OLLSCOIL NA GAILLIMHE
UNIVERSITY OF GALWAY



Desirable Qualities

Academic ability

Interpersonal skills

Maturity

Research capacity

Relevant work experience

“Psychological mindedness”

Good References



OLLSCOIL NA GAILLIMHÉ
UNIVERSITY OF GALWAY



OLLSCOIL NA GAILLIMHÉ
UNIVERSITY OF GALWAY

Standing out from the crowd

Immerse yourself in all aspects of psychology

Attend training courses

Join student psychology committees

Get involved with PSI

Present at conferences

Write psychology articles

Publish your research

Get involved in activities that enable you to apply your psychology knowledge

[Support for Aspiring Clinical Psychologists \(lancs.ac.uk\)](https://lancs.ac.uk)





OLLSCOIL NA GAILLIMHE
UNIVERSITY OF GALWAY

Thank you



University
ofGalway.ie

Contact Details

**Programme Administrator
Doctorate in Clinical Psychology
School of Psychology
University of Galway
University Road
Galway H91 TK33**

Tel: (091) 493266

clinicalpsychology@universityofgalway.ie



OLLSCOIL NA GAILLIMHĒ
UNIVERSITY OF GALWAY