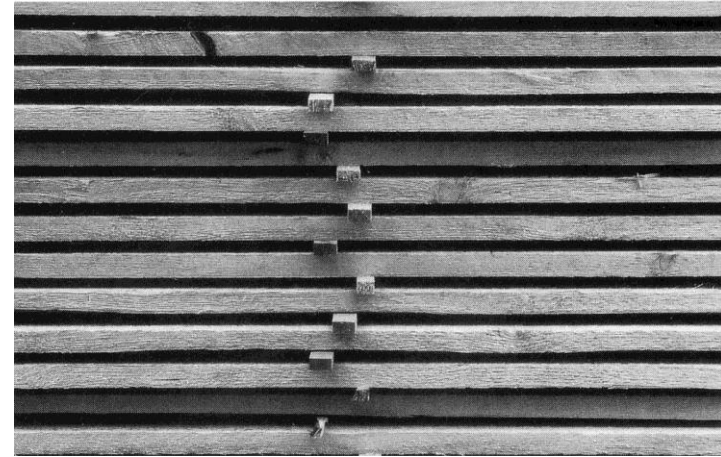
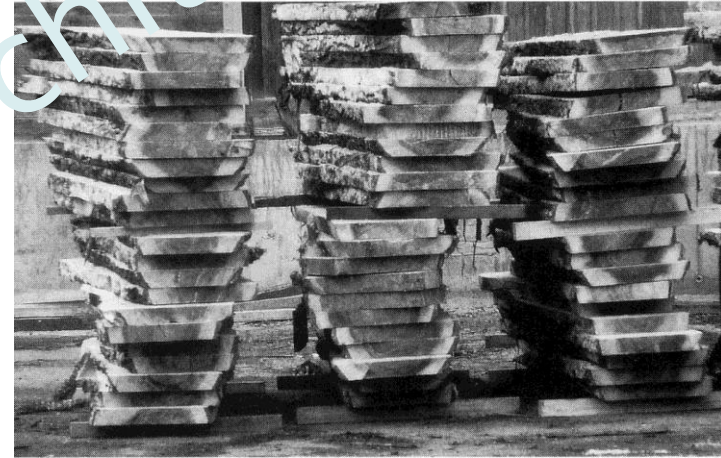


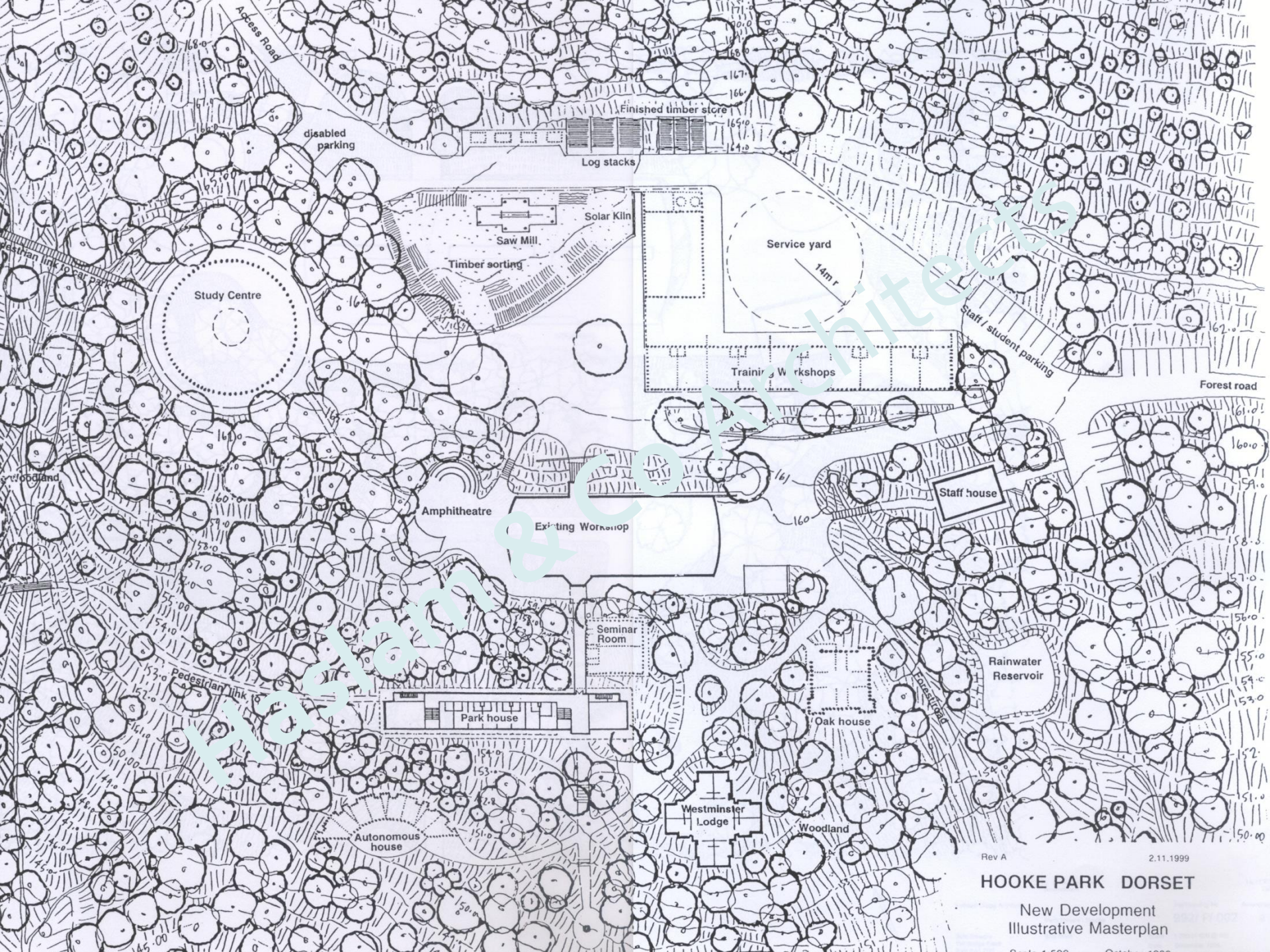
## Timber – Carbon Sink Construction



- Systems approach to designing within a circular economy.
- Nature as a cyclical cradle to cradle biological system
- Timber as a carbon neutral material.
- Timber as a carbon sink constructional system







Rev A 2.11.1999

# HOOKE PARK DORSET

New Development  
Illustrative Masterplan

Scale 1:500 October 1999





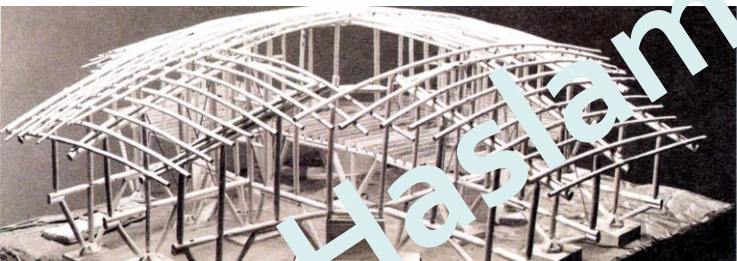
Hooke Park Forestry Campus.





Haslam & Co Architects





Hooke Park Forestry Campus.



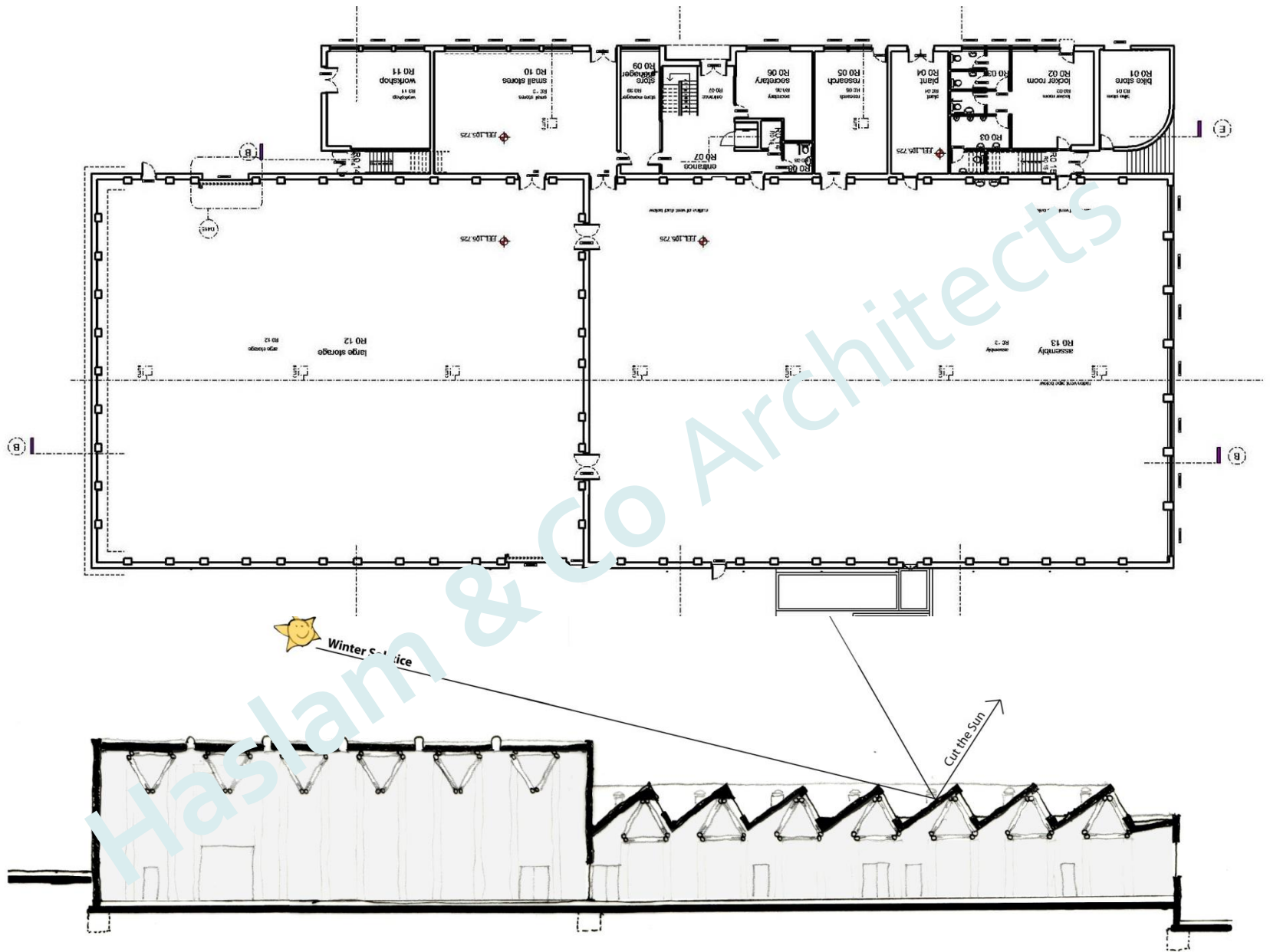






Rehan Electronics Factory, Wicklow.





Rehan Electronics Factory, Wicklow.





Haslam & Co Architects









Haslam & Co Architects





Haslam & Co Architects



Haslam & Co Architects







Haslam & Co Architects

Rehan Electronics Factory, Wicklow.





Architects

Rehan Electronics Factory, Wicklow



Haslam & Co Architects







**Castle Espie Comber.** Image: Ros Kavanagh









Haslam & Co Architects



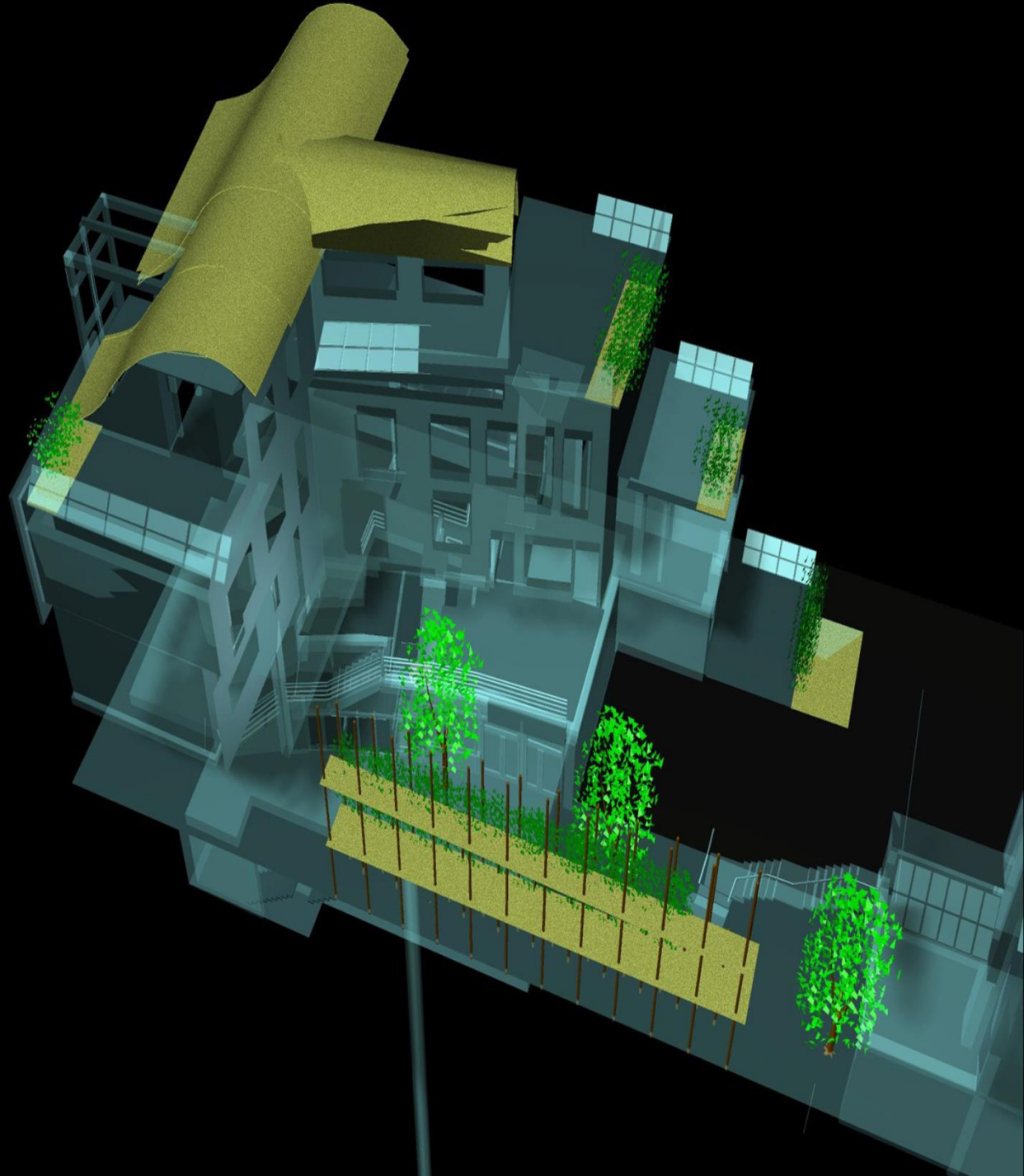
Haslam & Co Architects



**Daintree Building Dublin.**



Haslar



**Daintree Building Dublin**









Haslam & Co Architects

**Daintree Building Dublin**





Haslam & Co Architects

**Daintree Building Dublin**







Haslam & Co Architects

**Daintree Building Dublin.**

Image: Ros Kavanagh





Haslam & Co Architects



Wetlands Centre Ballybay





Haslam & Co Architects

25 4 2007



Haslam & Co Architects

9 5 2007



Haslam & Co Architects

23 5 2007



Haslam & Co Architects



Image: Ros Kavanagh



Haslam & Co Architects

Image: Ros Kavanagh





Haslam & Co Architects

Image: Ros Kavanagh

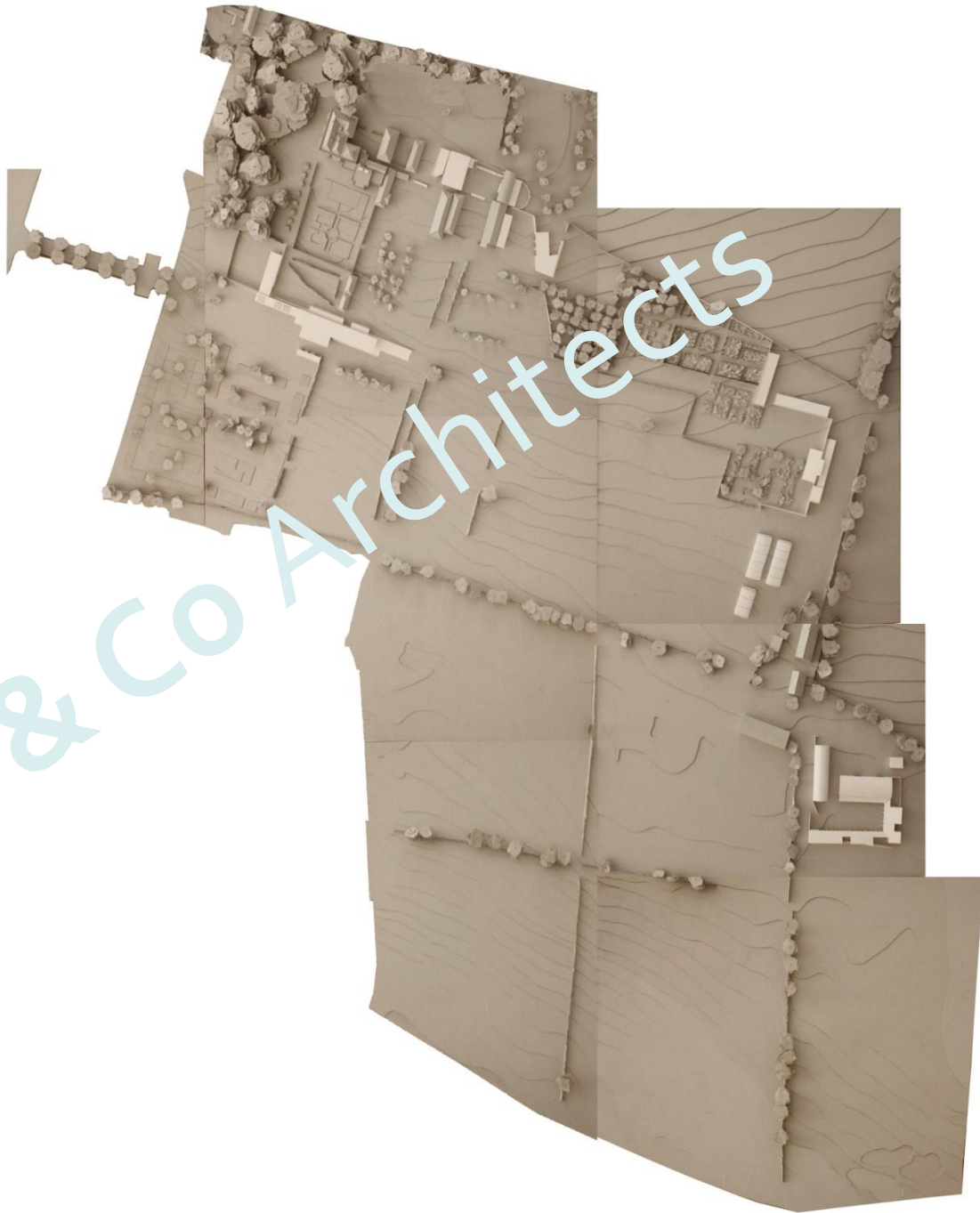


Haslam & Co Architects



Image: Ros Kavanagh





Haslam & Co Architects

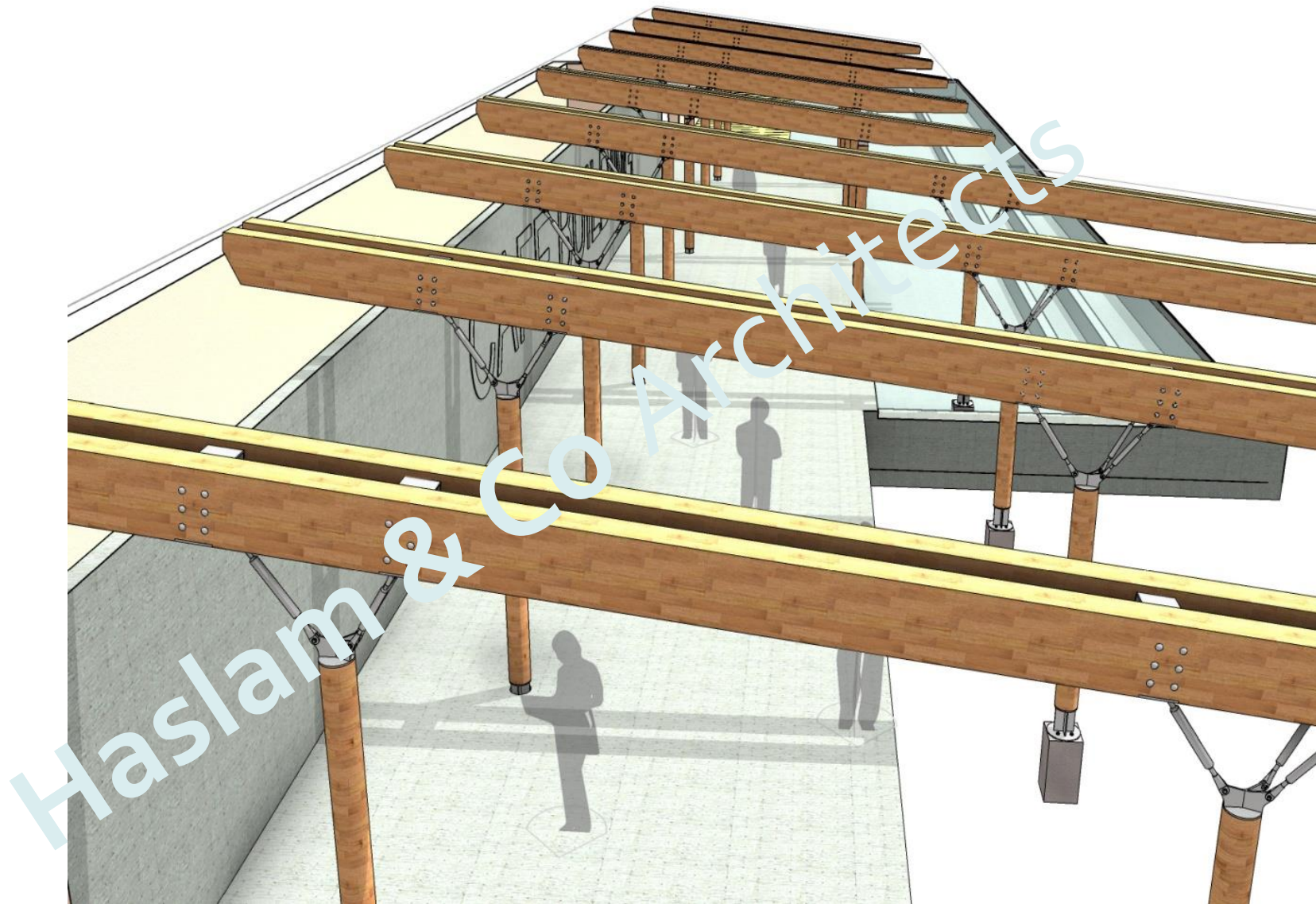
Airfield Estate Dublin





Airfield Estate Dublin. Image: Ros Kavanagh





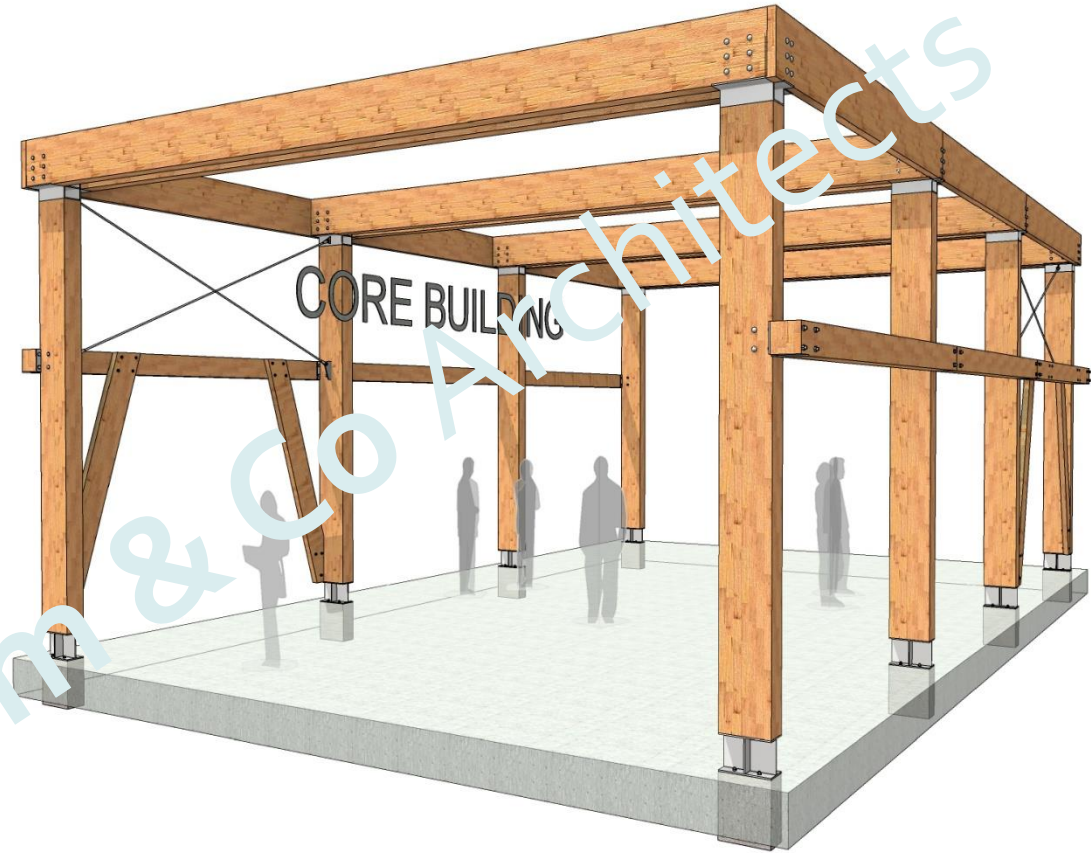
Airfield Estate Dublin





Airfield Estate Dublin. Image: Ros Kavanagh





Airfield Estate Dublin





**Airfield Estate Dublin.** Image: Ros Kavanagh





Airfield Estate Dublin. Image: Ros Kavanagh





Airfield Estate Dublin. Image: Ros Kavanagh





Airfield Estate Dublin. Image: Ros Kavanagh





Airfield Estate Dublin. Image: Ros Kavanagh





GIY HQ Waterford. Image: Ros Kavanagh





**GIY HQ Waterford.** Image: Ros Kavanagh





Haslam & Co Architects

**Cross Laminated Timber construction**





**Baldoye Community Centre CLT construction**





**William Perkin sports hall** FCB Architects





Concrete 'radiators' within timber frame  
**FCB-Studios(2010)**

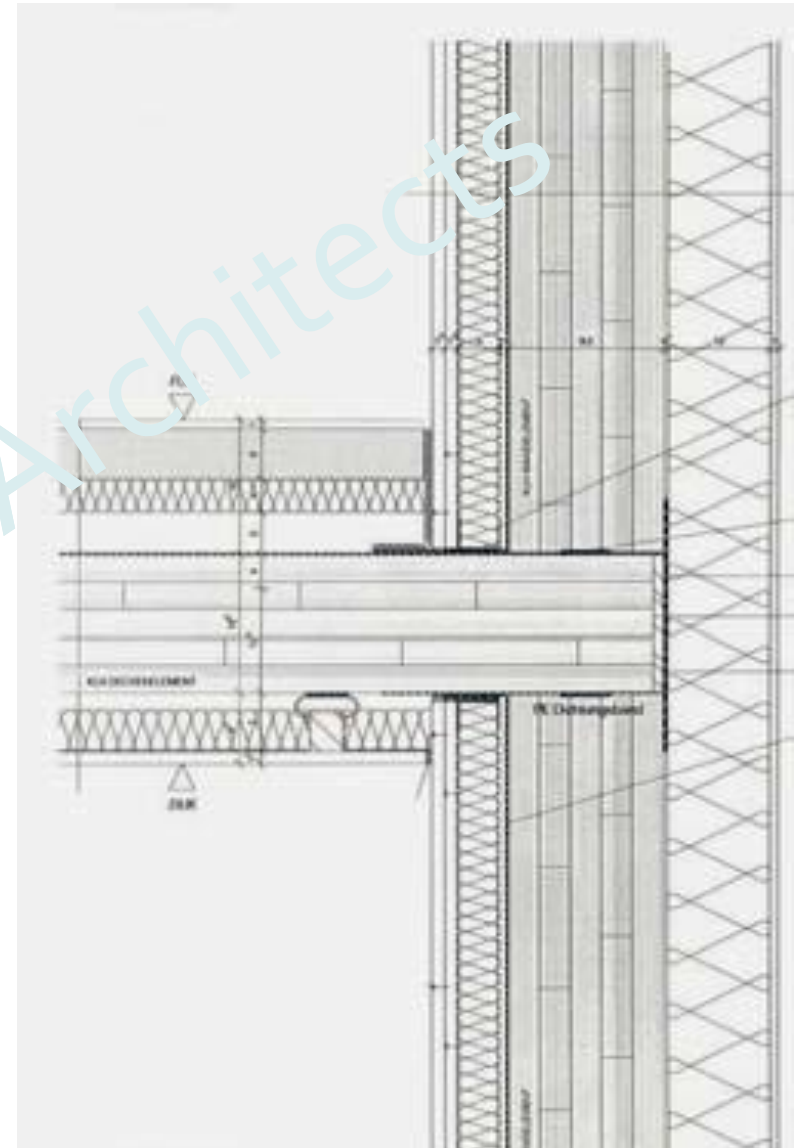
The use of thermal mass in a light weight construction to balance temperature gains passively.



Acoustic separation

Fire encapsulation

External insulation system



**CLT construction detail issues**





**Stadthaus, Hackney, London, Murray Grove Architects**

**MAKING A 9 STOREY CONCRETE BUILDING EMITS 500T OF CO<sub>2</sub>**

**MAKING A 9 STOREY TIMBER BUILDING SEQUESTERS 760T OF CO<sub>2</sub>**





Haslam & Co Architects

Haut, Amsterdam hybrid timber tower